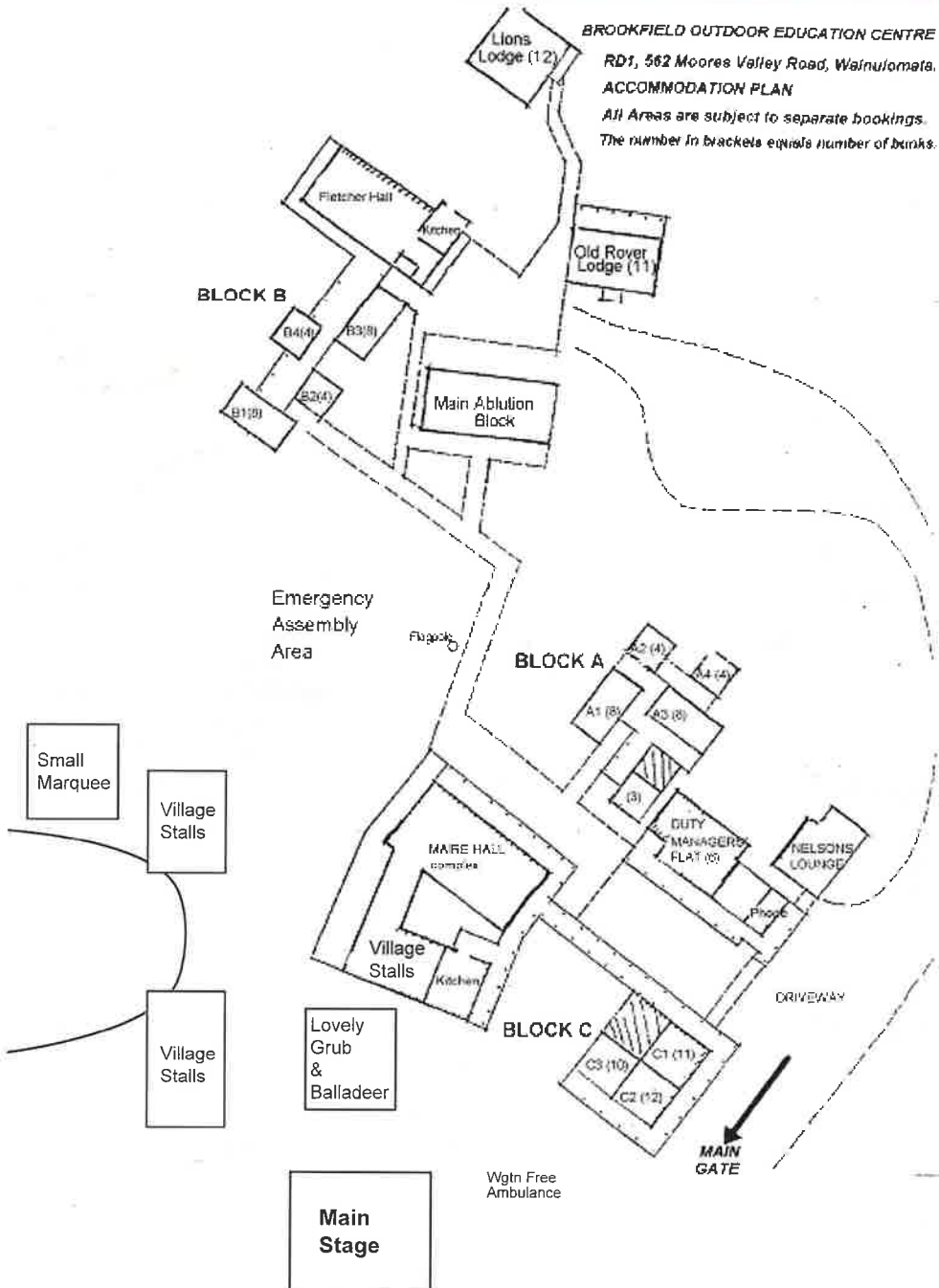


Site plan



WELLINGTON FOLK FESTIVAL



Programme

Labour Weekend
23-26 October 2015

facebook.com/wellyfest

wellingtonfolkfestival.org.nz

Acknowledgements

The Festival is delighted to be supported by:

Hiremaster
event & party

 **THE LION
FOUNDATION**

Hutt City Emergency Management Group

Without these organisations we wouldn't be able to run the festival and we thank them for their on-going support in tough economic times.

The Wellington Regional Folk Foundation organises the Festival. Anyone who has attended a Festival and paid the annual membership fee (\$1.00) can be a member and help vote for next year's committee at the AGM (usually in late February).

If you'd like to join WRFF, see Peter Whiting, the Treasurer, and pay him the \$1.00 fee.

The 2014 committee is:

President: Gerard Hudson
Secretary: Jenny Kilpatrick
Treasurer: Peter Whiting
Site Manager: Simon Bishop
Stage Manager: Sue Ikin
PR: Sue Harkness
Members: Ruth Birnie
Jude Madill
Kevin McLoughlin

The Committee would like to thank the many people without whom the festival would not be possible; our crew, volunteers, the Friends of Brookfield and the Rovers.

Thanks also to the clubs and businesses which support folk music throughout the year. Please support them in return.



Welcome to the 51st Wellington Folk Festival.

No matter if this is your first Wellyfest or your 51st we hope you'll enjoy all the concerts, workshops and sessions. We set ourselves a hard act to follow at last year's 50th festival and I'm proud to present you with another exciting, high quality and diverse programme. As always, you'll have loads of opportunities to make new friends, hear new music and learn new skills and new dances. Check out the schedule in the middle of this programme.

The kids' programme is as packed as always, as is the dance programme – plenty of activity so there's exercise value as well as musical stimulation.

If you just can't decide where to go next, the Balladeer café venue will keep you fed, watered and entertained while you work it out.... always assuming you can then pull yourself away from its performers. This is one place where you might catch some of the spontaneous and surprise performances that make folk festivals so special. After great appreciation last year, we have arranged again for craft beers to be available along with the Balladeer café's meals, snacks and coffee.

There are a few site rules on the inside back cover of this programme that are a condition of us being able to use this wonderful venue. Please read them and follow them. The Festival Committee's requests on page 2 are mainly common sense and just make life more comfortable and enjoyable for everyone.

Our main request is that you enjoy yourself. If you see something that's not right, or not working, please let one of the committee know. You'll recognise the committee members by their green fleecy jackets. Talk to one of us and we'll see what we can do to put it right. You can also just talk to us and tell us what you are enjoying about the festival.

And if you've never performed for an audience before now is a great opportunity to start or join in. You can join the festival choir, put your name down for a blackboard concert, find out how to play that instrument, or join a jam session. Many indoor venues are available for sessions outside the programmed hours and hopefully you will find memorable performances, jams and singing just happening into the wee small hours.

We've put together what we hope will be another fantastic festival with something for everyone. So relax and enjoy. Wishing you a wonderful weekend on behalf of the committee.

Gerard Hudson

President.

Festival Requests

We want to make sure that everyone enjoys the Festival so here are a few requests and conditions.

- Registration wristbands or day tickets must be worn at all times and shown if requested.
- Please **wait for a break in the music before entering or leaving** enclosed performance venues.
- Please do not talk through concerts or workshops – go outside.
- If you intend to take part in a workshop please be at the venue on time for the start.
- The sound equipment is off limits to everyone (except crew).
- Parents – you are responsible for making sure your children don't disrupt concerts or workshops or touch sound equipment or anyone else's musical instruments.
- Musicians – take care of your instruments. The Festival Committee cannot guarantee their safety.
- **No smoking inside any venues.** Smokers please be responsible for cleaning up your butts when smoking anywhere in the grounds.
- Please keep alcohol locked away at all times so that under-aged people do not have unsupervised access.
- Scout rules okay – **NO DRUGS.**
- No pets of any sort - this is a wildlife reserve.
- Finally – Please, everyone **MUST** be packed up and off site by 1pm on Monday to allow the clean up teams free access.

There are also **SITE RULES** set out by the Scouts Association which are a condition of our use of the site. They are printed on the inside back cover of this programme – please make sure you follow them.

Anyone behaving in an offensive, unsafe or illegal manner will be asked to leave the Festival.

Emergencies

If an emergency arises, contact one of the committee - wearing the green fleecy Wellyfest vests. The phone in the Leaders' Flat is available for making calls to the emergency services.

If there is a fire or emergency siren, please **DO NOT** try to leave the site or block any of the roads - they must be kept clear for emergency vehicles. The emergency gathering point is around the flagpole, between the Maire Hall and the toilet block.

Food and Drink on Site

Catering by Lovely Grub

There's a café in the Balladeer tent next to the Maire Hall. There will be a wide range of drinks and snacks available all day.

Larger meals will be available at lunch and dinner time. To help with queues and cash handling at meal times, the caterer will pre-sell dinner tickets.

The caterer has a liquor licence as well for those who would like a glass of wine or beer with their meal.

Self Catering

There are kitchens available in the Fletcher Hall and down by the main drive if you want to self-cater. Please consider all users of the kitchens and make sure you clean up after yourselves. If you use equipment belonging to the camp, wash and dry it and put it away before you leave the kitchen.

Excess equipment in the self cater kitchens has been removed – please clean up immediately so the next group can use it.

You can also use gas cookers or BBQs as needed, but no open fires except in the designated places.

CD Sales

Most of our guests will have CDs for sale and these will be available throughout the festival from either The Balladeer tent or the guests themselves.

However, CDs won't be sold from backstage – we must clear the venues quickly so that the next performers can be set up.

Phones and Money

There are no EFTPOS or credit card facilities on site. There are several dairies, ATMs, supermarkets, liquor stores and fast food outlets in Wainuiomata.

Mobile phones don't get reception on site. You are likely to be able to make calls about 2kms back down the road. Local calls can be made from the site phone but please keep these very short – this is our only phone line and needs to be kept clear for emergencies.

Thanks to the satellite provided by the Wellington Regional Emergency Management Organisation and Hutt City Emergency Management Group there is data connection available. Please keep your data use to a reasonable level and avoid indiscreet use of your phones in venues and concerts.

Site Facilities

Services including rubbish, water heating and general services are provided by the Friends of Brookfield, the Rovers and Festival volunteers. If you notice a problem please advise a committee member who will then contact the right person to deal with it.

Please do NOT take wood from the stack in the store on the upper field. This is needed to keep the water hot in the shower block there.

In past years, we have had a real problem with litter left around the site, especially in the "top field" camping area up past the Lions Lodge and around the two self catering kitchens. Please ensure that you clean up after yourselves and leave the kitchens ready for others to use, put your rubbish in one of the bins provided or take it home with you. So that we place less strain on services please take your recyclables home also.



Lost Property

Please bring any found property (including found children) to the Duty Manager's Flat near the Nelson Lounge. If you lose anything please come to the Duty Manager's Flat. See back cover for site map.

Questions or Concerns

Committee members will be wearing green fleecy jackets over the weekend, so if you have questions or concerns talk to anyone in a Wellyfest jacket. Or come to the Duty Manager's flat, opposite the Maire Hall – there's usually someone there.

Remember, we can't fix something if we don't know it's wrong.

Wellington Free Ambulance

Wellington Free Ambulance will be on site for the weekend, with a fully equipped ambulance, to assist anyone needing medical treatment.

ULC Trio



ULC is a Danish/Irish trio formed in 1998. From the outset, felt it seemed more natural for them to combine their various music traditions rather than confine themselves to one particular genre. Traditional Danish music from the 17th century, beautiful and haunting dance tunes from the island of Fanø, songs from the Irish /Celtic tradition as well as American folk, bluegrass and swing music make up the band's extensive repertoire.

Peter Uhrbrand: Fiddle. Peter Uhrbrand is one of Denmark's most influential traditional musicians and has toured New Zealand with *Faerd*. In October 2014, he received the prestigious *Gudman Pris*, an award which is normally given to Danish rock musicians.

Sonnich Lydom: Accordion and harmonica. Sonnich's first introduction to traditional music was through his strong family ties on the island of Fanø and this music has been a part of his repertoire ever since.

Seamus Cahill: Guitar, Bouzouki and Vocals. Seamus originally comes from Cork and has been playing Irish traditional music since the seventies.

Performances:

- *Danish folk dance workshop, Saturday, 1.30pm, Fletcher Hall*
- *In concert, Sunday, 11.45am, Main Marquee*
- *Final Concert, Sunday evening, Main Marquee*

Fred Smith and Liz Frencham



The Frencham Smith duo has been described as delicious, emotionally intelligent and entrancing folk music for the 21st century. Blending Liz Frencham's double bass and voice with the songwriting, singing and guitar work of Fred Smith, they play songs rich in thought, warmth and humour.

Photo by Geoffrey Dunn

"Smith is a superb songwriter... Frencham has a voice with the appeal, emotional honesty and clarity of someone like Shawn Colvin... There is no other folk duo in Australia which even comes close to this magical combination." Bruce Elder, Sydney Morning Herald

"I saw two of their performances, which stunned me with their sincerity and passion. Sometimes comic, at other times moving, the duo stretched the boundaries of songwriting like an emotional rubber band always returning to a secure and loving musical foundation." Peter James Dawson, Trad&Now, December 2011.

In real life, Fred is an Aussie diplomat, working in Bougainville, the Solomon Islands and more recently Afghanistan. His experiences inform and infuse his songs. "The world is currently facing more simultaneous violent conflicts than at any time since World War II, mostly civil wars. The humanitarian response is important, but in the long run we need to address the problems of intrastate conflict. If the answers were simple, we would have found and fixed them by now!"



Performances:

- In concert, Saturday, 11.45am, Main Marquee
- Songwriters' Forum, Sunday morning, 10.30am, Small Marquee
- Final concert, Sunday evening, Main Marquee

Kirsty Bromley



Kirsty is a young contemporary folk singer based in Sheffield who draws upon a wide range of traditional music. She has a most disarmingly transparent voice, but also the uncanny and beautiful knack of drawing attention to the song, rather than the messenger, by the manner in which she employs it. Her debut album *Time Ashore* features original songs as well as carefully curated folk gems. She has worked alongside well respected UK musicians like Chris Coe, Martin Simpson and played in the Eliza Carthy Motown Ceilidh Band.

Kirsty is also a very experienced Morris dancer and is in demand as a teacher of rapper, longsword and Cotswold styles.

"Kirsty Bromley is a singer of songs of social justice, traditional songs and songs from the heart. Her voice is effortless yet stirring, at times ethereal but always earthy and with strong roots. Musical and beguiling." Nancy Kerr

Performances:

- In concert, Saturday, 3.15pm
- Morris dance workshop, Sunday 2.00pm, Fletcher Hall
- Final concert, Sunday evening, Main Marquee
- (likely also to feature in Saturday night's trad session, 11.00pm, Fletcher Hall)

King Leo

King Leo join us from their home base in Dunedin where they are known for rocking in the New Year at Whare Flat, after the barndance. Featuring Leo LaDell on vocals, guitar, harmonica and piano; Hayden Maskell – bass; Jim Strang – drums; Stevie Rice – sax and Ralph Miller – trumpet.

Leo LaDell is a veteran Blues musician who combines the classic sounds of Chicago, Texas and New Orleans with distinctive songwriting to bring high-intensity blues to stages across New Zealand. His experience playing in the US with a variety of blues bands and such masters in the genre as Bo Diddley and Pinetop Perkins has enabled King Leo to craft an authentic, original and diverse blues sound, great for listening and dancing.

Performances:

- In concert, Saturday 5.00pm, Main Marquee
- Blues workshop, Sunday 2.00pm, Maire Hall
- Songwriters' Forum, Sunday 10.30am, Small Marquee
- Final concert, Sunday evening, Main Marquee



Kim and Dusty



Since forming two years ago Kim and Dusty have become familiar faces around Wellington and throughout New Zealand touring the length of the country from Bluff to Whangarei. Playing as a duo, Kim and Dusty have established themselves as a compelling act. Spectacular harmonies are the bedrock of their sound which encompasses country, blues, bluegrass and folk.

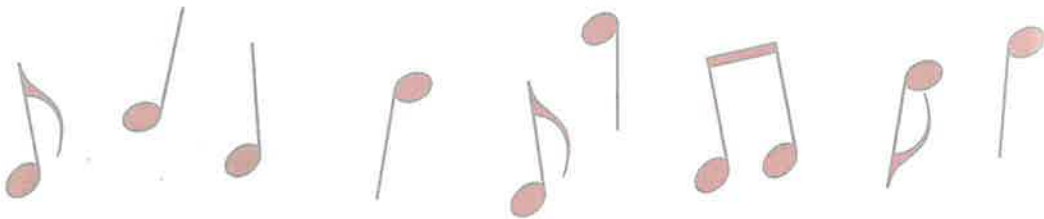
Dusty suffers from a severe condition known as Musical ADHD which drives him to try his hand at any instrument with strings. He has lost count of the number of projects he is currently involved in (including The Federal String Band, The Hardcore Troubadours and The Frank Burkitt Band). "I'm kind of like the town bike..... just cheaper" but says that Kim always brings out the best in him. "It's truly rare to find someone with whom you can share a perfect vocal blend."

Kim has been performing in the country music clubs of the top of the south since she was old enough to talk and grew up on a healthy diet of

Emmylou Harris, The Judds, Merle Haggard and Marty Robbins. "Be it Emmylou and Gram, Naomi and Wynonna, Merle and Bonnie or my Mum and Dad, I had great role models when it came to finding harmony that tracks and complements".

Performances:

- *In concert, Saturday 1.30pm, Main Marquee*
- *Kim hosts the Invitation Concert, Saturday 7.30pm, Small Marquee*
- *Final concert, Sunday evening, Main Marquee*



The Pipi Pickers



When you just need that sweet Bluegrass sound, The Pipi Pickers won't disappoint. Heavily influenced by New Grass Revival and Tim O'Brien, the four piece bluegrass band rejoice in laying down their energetic, contemporary, "full-bodied" style of bluegrass.

Hailing from the seaside village of Leigh, they're a regular feature at the Bunker in Devonport, playing for both the folk and bluegrass clubs. Residents and visitors to the Matakana Coast region will likely have run into them playing the Leigh Sawmill, Matakana Farmer's Market, and other local events. Often praised as the "second best free band in Leigh," they're a favourite at such local fundraisers as the Leigh Fishing Competition and the Whangateau Hall annual country faire.

The Pipi Pickers are Barry Torkington on guitar, Garry Bigwood on mandolin, guitar and vocals, Nat Torkington on 5 string banjo, and Jenine Abarbanel on double bass and vocals. Jenine's strong leading vocals have been compared to Natalie Merchant and Gillian Welch. Nat Torkington is considered one of the best Scruggs-style 5-string banjo pickers in New Zealand, and his licks will blow your mind.

Performances:

- *Beginner bluegrass "slow jam", Saturday 10.00am, Maire Hall*
- *In concert, Sunday 10.00am, Main Marquee*
- *Final Concert, Sunday evening, Main Marquee*

Gillian Boucher and Bob McNeill



"In the hands of Gillian Boucher, the violin becomes a vehicle of transportation for the mind... Her lyrical approach and sensitivity transcends genres and cultures, transporting listeners to far off exotic places accessible only in imagination." – Glenn Meisner, CBC Radio

Originally from Inverness County, Gillian was born into a family steeped in Cape Breton traditional music and

language. Her grandfather was a renowned Gaelic singer and storyteller. Already an avid step-dancer, Gillian first held the violin at the age of 10 and has continued to delight audiences around the world with her unique approach to the music of her heritage.

Bob McNeill, originally from Scotland, moved to New Zealand in 1999 and quickly established himself. An innovative songwriter, he has three New Zealand Music Awards for Best Folk Album. His songs have been covered by artists in New Zealand, Scotland, Australia and the USA. McNeill's musical and songwriting style is a hybrid of the Celtic music of his native Scotland and the American New Folk and Americana styles.

As a duo, Gillian and Bob are a musical force to be reckoned with. With a show featuring heart-wrenching slow airs, riveting arrangements of songs and toe-tapping tunes, Gillian Boucher & Bob McNeill take what you know about traditional Scottish music and bring it to another level altogether.

Performances:

- *In concert, Sunday 1.30pm, Main Marquee*
- *The Mabou Set dance workshop, Saturday 11.30am, Fletcher Hall (Gillian)*
- *Songwriters' Forum, Sunday 10.30am, Small Marquee (Bob)*

The Muggeridge Family

Janet, Cindy and Steve Muggeridge started playing together more years ago than any of them care to remember in a band in London. The initial lineup included Alan Muggeridge, sadly now deceased. They have each had their own musical paths since but have been inspired to get together to support each other in performing their own songs and some of Alan's original songs for the Wellington Folk festival.

The line-up also includes Michael Muggeridge, representing the next generation of musicians from this well known family. Michael is an exciting performer who has already started to win hearts on the local scene.



Performances:

- *In concert, Saturday 5.30pm, Small Marquee*
- *Michael appears in the Looking Forward Concert, Saturday 1.30pm, Small Marquee*

Kelburn Viaduct Municipal Ensemble Jug Band



Jug bands are part of the folk music tree and this is a chance to experience authentic jug band music, influenced by blues, ragtime, early jazz and country. There's nothing quite like the combined sound of washboard, tea chest bass and lagerfone, supporting harmonies, guitars, mandolins, banjo plus harmonica and kazoo – not forgetting the jug.

The KVMEJB (for short) features Neil Worboys (banjo, mandolin, jug, harmonica, kazoo); Bill Wood (tea chest bass, resonator guitar); Pip Payne (lagerfone, resonator guitar, stomptbox); Maurice Priestley (acoustic guitar, mandolin) and Steve Carlisle (washboard, tea chest bass).

Each band member has a long association with jug bands. Neil and Bill have been part of at least five with Neil being the lead vocalist for The Bull Dog All Star Goodtime Band. Blues based, but retaining the texture and traditions of a trad jug band, the KVMEJB came together just a year ago and have already performed at the Manawatu Jazz Festival and as closing act for the Gardens' Magic alongside the Bull Dogs' reunion. Their first gig was at the Kelburn Pub, which has a Viaduct, hence the name.

Performance:

- *In concert, Sunday 12.30pm, Maire Hall*

Rosy Tin Teacaddy

Rosy Tin Teacaddy are an 'alt-folk' duo from Wellington formed in 2007, who have a reputation for narrative songwriting highlighted by tightly crafted lyrics and blended male/female harmonies.



They have a new EP entitled *In Kindness or Injury*, due for release in 2015. Their debut EP, *Blind Leading The Blind* opened to audiences with a sold-out theatrical show. Their following full-length album, *The Homeward Stretch* was recorded with multi-award winner Lee Prebble, and was warmly received by fans and critics.

The duo have appeared at numerous arts festivals and supported acts including Iron & Wine, Jose Gonzalez and Rhian Sheehan. In 2013 they received Best Music Award at NZ Fringe Festival.

Performances:

- *In concert, Sunday 3.15pm, Main Marquee*
- *Songwriters' Forum, Sunday 10.30am, Small Marquee*

Albi and the Wolves



Albi and The Wolves bring old school folk solidarity back into the modern age. With love and respect for music in all its forms, Albi and The Wolves not only offer vibrant and refreshing original songs which burst open the seams of traditional folk music, they also inject their signature sound into modern classics from artists as diverse as Michael Jackson, and Pink Floyd.

The members Chris Dent (guitar and lead vocal), Pascal Roggen (violin), Matt Owens (banjo) and Micheal Young (double bass) reinvigorate folk music

in the whole sense with their dynamic style, acoustic instrumentation and world class musicianship. The band infuses country elements, traces of soul, rock and pop into fantastic live performances with good banter and crowd reaction. So whether it's a sit down show or a rowdy foot stomping bar, each gig is unique and a whole lot of fun.

Performances:

- *In concert, Sunday 5.00pm, Main Marquee*
- *How to engage with your audience, Saturday 3.00pm, Maire Hall*
- *Albi appears in the Looking Forward Concert, Saturday 1.30pm, Small Marquee*

Chilli Jam

For more than a decade, Chilli Jam has been jamming it up at contra dances, ceilidhs, festivals and parties in and about Wellington. A legendary list of luminaries has graced the stage with founding members Bernard Wells and Mark Howell. The current line-up of accomplished musicians features:

- Bernard Wells: fiddle, flute, mandolin, guitar
- Mark Howell: hammer dulcimer, banjo, mandolin, guitar
- Liz Auchinvole: fiddle
- Jonathan Berkahn: accordion, keyboard
- Pete Rochford: bass guitar

The Chillis are probably the hardest-working group (other than the committee) at the Festival.

Performances:

- *Welcome ceilidh, Friday 8.00pm, Fletcher Hall*
- *Dance workshop programme, Saturday and Sunday, Fletcher Hall*
- *Barndance, Saturday 7.30pm, Main Marquee*
- *Jonathan will lead the Folk Service, Sunday 9.30am, Nelson Lounge*



Rob Joass

Rob's face will be well known to many in folk music circles through his work with *Hobnail*, *The Shot Band* and *Too Many Chiefs*. He has travelled the length and breadth of New Zealand playing every type of venue imaginable.

Rob has earned praise for his songwriting throughout his career, and has had songs covered by bands in New Zealand, Australia and Canada. Hobnail Boots' album *The Fortune Horses* was a finalist for Best Folk Album while Rob has twice been a finalist for Best Country Song at the NZ Music Awards.

In 2014 Rob released his second solo album, the stripped back acoustic *Black and White*. "Accomplished.....powerfully beautiful...well focused songs...lived in voice" Graham Reid.

During the process of rehearsing and recording *Black and White*, Rob began collaborating with a number of friends, and this led him to form *The Hard Core Troubadours*, a band which can range in number from a duo to an 8 piece as circumstances allow. The "Troubadours" are some of Wellington's best known and hardest working musicians in the folk/country field, including **Kim Bonnington** (guitar and vocals) and **Cameron 'Dusty' Burnell** (mandolin and vocals).

Performances:

- *In concert, Saturday 10.00am, Small Marquee*
- *Songwriters' Forum, Sunday 10.30am, Small Marquee*



The People's Choice – Ruth Mundy

Ruth Mundy is a singer-songwriter whose songs will simultaneously make you smile and break your heart. With folk, protest, and indie influences, Ruth combines frank lyrics with gorgeous melodies. Born in the UK but feeling more at home in New Zealand, Ruth has just finished recording her debut EP 'Don't Be A Monster'. She is incredibly excited to have won the People's Choice Competition to play at the Wellington Folk Festival 2015.

Ruth will be touring during the year ahead, sharing her heartfelt, honest, funny, political, and above all beautiful songs with audiences across New Zealand.

Performance:

- *In concert, Saturday 10am, Main Marquee*



Maire Hall	Main Stage	Nelson Lounge	Fletcher Hall	Small Marquee	Balladeer
FRIDAY 23 OCTOBER, 3.00pm, GATES OPEN FOR REGISTRATIONS					
Open for jamming		Open for jamming	8.00pm Welcome Ceilidh 11.00pm	Open for jamming	6.30pm Opening Concert 11.00pm
SATURDAY, 24 OCTOBER					
10.00am Beginner bluegrass 'slow jam' with The Pipi Pickers 11.00am	10.00am People's Choice - Ruth Mundy in concert 11.00am	09.30am Children's tunes - part 1 with Evie, Daniel & friends 10.30am	09.30am Scottish Ceilidh workshop with Noel Armstrong 11.00am	10.00am Rob Joass in concert 11.00am	10.00am
11.30am Blackboard concert Hosted by Acoustic Routes 2.30pm	11.45am Fred Smith & Liz Frencham in concert 12.45pm	11.00am Children's songs - part 1 with Evie, Daniel & friends Midday	11.30am The Mabou Set Gillian Boucher 1.00pm	11.30am The Critics Ewan MacColl Tribute concert/workshop 1.00pm	Balladeer Invitation sets
		12.30pm Ukelele workshop Don Franks 1.30pm			
		1.30pm Kim & Dusty in concert 2.30pm	2.00pm Mindfulness - guided meditation with Jan Rivers 3.00pm	1.30pm Danish folk dances ULC Trio 3.00pm	
3.00pm How to engage with the audience Albi & the Wolves 4.00pm	3.15pm Kirsty Bromley in concert 4.15pm	3.30pm All comers' singaround with Murray Kilpatrick 5.00pm	3.30pm Irish Step Ceili dance workshop with Helen Stonehouse 5.00pm	4.00pm Festival Choir with Nipperkin Pipperkin 5.00pm	
4.30pm Americana Blackboard concert Hosted by Peter Dyer 6.30pm		5.00pm King Leo in concert 6.00pm	5.30pm Home brew appreciation (Over 18s only) 6.30pm	5.30pm The Muggeridge Family in concert 6.30pm	
Open for jamming	7.30pm Barndance with Chillli Jam 11.00pm	10.00pm Round and round and round - trad warmup 11.00pm	Open for jamming to 11pm only	7.30pm Invitation concert Hosted by Kim Bonnington Midnight	
			11.00pm Singing session with David Barnes and the brewers Late	Midnight	

Maire Hall	Main Stage	Nelson Lounge	Fletcher Hall	Small Marquee	Balladeer
SUNDAY, 25 OCTOBER					
10.00am Blackboard concert midday	10.00am Pipi Pickers in concert 11.00am	9.30am Folk Service with Jonathan Berkahn 10.00am	10.00am Border Morris dance workshop with Vergin Morris 11.30am	10.30am Songwriters' Forum Fred Smith & Liz Frencham, Rosy Tin Teacaddy, Rob Joass, Bob McNeill, Leo LaDell midday	10.00am Balladeer Invitation sets Midday
12.30pm Kelburn Viaduct Municipal Ensemble Jugband In concert 1.30pm	11.45am ULC Trio in concert 12.45pm	Midday Children's songs - part 2 with Evie, Daniel & friends 1.00pm	Midday Irish Set dance workshop with Noel Armstrong 1.30pm	1.00pm Joan Prior Finalists in concert 2.00pm	Midday The Liars' Lunch poetry session Hosted by Janette Wallace-Gedge 1.30pm
2.00pm Beyond 12 bars - blues workshop with King Leo 3.00pm	1.30pm Gillian Boucher & Bob McNeill in concert 2.30pm	1.30pm Mindfulness - guided meditation with Jan Rivers 2.30pm	2.00pm Morris dance workshop with Kirsty Bromley 3.30pm	2.30pm By and for the children Concert 4.00pm	1.30pm Balladeer Invitation sets
3.30pm Blackboard Concert 6.30pm	3.15pm Rosy Tin Teacaddy in concert 4.15pm	3.00pm Open for jamming 6.00pm	4.00pm Playford dance workshop with Helen Stonehouse 5.30pm	4.30pm Festival Choir with Nipperkin Pipperkin 5.30pm	6.00pm
	5.00pm Albi & the Wolves in concert 6.00pm		7.30pm Main Concert 11.00pm		

MONDAY, 26 OCTOBER

10.00am
Final Singaround
12.00pm

Pack up and off site by 1pm

4.00pm
The final fling - Sprig & Fern Tavern, 342 Tinakori Road, Thorndon
Late

Friday Welcome Concert

Friday 6.30pm, The Balladeer

It's a new tradition to hold our welcome concert in the Balladeer café venue. Jude and Ruth organise the Friday night in advance and we're so excited at the great and diverse first evening lineup we're going to share it in advance.... subject to change if necessary here's the provisional lineup for Friday this year. Some of these will be once only performances so don't expect to see them anywhere else in the weekend's programme.

Tony and Karen with The Lucky Ones

Rob Joass

Helen Stewart

The Madillionaires

Kirsty Bromley

The Frank Burkitt Band

Liz Frencham

Albi and The Wolves

Friday Night Welcome Ceilidh

Friday 8.00pm, Fletcher Hall

Hosted by Chilli Jam

A true ceilidh (some dancing, some tunes, a song or story or so) – not just a dance. A great way to start the weekend and get in the festival mood with Chilli Jam.

Saturday Night Barndance

Saturday 7.30pm, Main Marquee

Dance your wellies off with our busy house band, Chilli Jam.

Bernard Wells - flute, fiddle, guitar and mandolin;

Jonathan Berkahn - accordion, piano;

Mark Howell - hammered dulcimer, mandolin, guitar and banjo;

Peter Rochford – bass;

Liz Auchinvole – fiddle

Sunday Night Final Concert

In the Main Marquee, Sunday 7.30PM

Suggestion: Bring along a low back chair or a cushion to sit on.

Kim and Dusty

Kirsty Bromley

The Pipi Pickers



ULC Trio

Fred Smith and Liz Frencham

King Leo

MC : Janette Wallace Gedge



Guest Workshops

Beginner bluegrass "slow jam"

Pipi Pickers, Saturday 10.00am, Maire Hall

Musicians of all levels are welcome to an introductory bluegrass "Slow Jam." The Papis will work through three traditional bluegrass songs, and play through them at a very slow pace. On the "strength in numbers" principle, each instrument (traditional bluegrass instruments: banjo, fiddle, mandolin, double bass, guitar, dobro) group will play their "break" at the same time, so nobody is put on the spot. Singers are especially encouraged to come along and add some beautiful harmonies. We'll also talk about the Circle of Fifths and how it applies to bluegrass and jam sessions.

Ewan MacColl tribute workshop/concert

By The Critics (led by Paul Brown)

Saturday 11.30am, Small Marquee

2015 is 100 years since the birth of Ewan MacColl – singer, songwriter, actor and activist. Paul Brown got this group of performers together to perform a tribute concert at the 2015 Auckland Folk Festival. We thought it would be a great idea, since they'd already done the work, to bring the gig to Wellington as it's still within the anniversary year of MacColl's birth. The tribute concert will showcase some of the best known songs of Ewan MacColl - setting them in context with narration about Ewan's life and work.

Ukulele instrumentals

Don Franks, Saturday 12.30pm, Nelson Lounge

Learn to play instrumentals arranged for ukulele, from an experienced teacher. Tasteful versions of classic tunes that will afford you pleasure to practice and master. Something here for motivated ukulele players of all levels.

How to engage with your audience

Albi and the Wolves, Saturday 3.00pm, Maire Hall

In this workshop the Wolves will walk you through some key ways to entertain and engage your audience.

They will cover some simple do's and don'ts, humour, how to understand your audience and how to engage with them in a way that keeps them interested for a whole set. Topics may include on stage positioning, to banter or not to banter, set list dynamics, interplay between band members, self promotion (a necessary evil), crowd participation, call and response, sing alongs, venue reshaping.

During this time they hope to keep you interested and entertained with stories of past mishaps and perhaps even play a song or two!

Guest Workshops continued

Songwriters' Forum

Sunday 10.30am, Small Marquee

Join Fred Smith and Liz Frencham, Rosy Tin Teacaddy, Rob Joass, Bob McNeill and Leo LaDell and hear them talk about their experiences and thoughts on songwriting.

Beyond 12 bars: different flavours of the blues

Leo LaDell/King Leo, Sunday 2.00pm, Maire Hall

There's a lot more to the blues than 12 bars and 3 chords. In this workshop you hear (or play along with) a wide variety of songs with diverse musical structure. Bring an instrument or just listen, and expand your blues palette! Chord charts and examples provided.



Acoustic Routes

Wellington Folk Club

Acoustic Routes is based in Wellington, promoting folk music in our rohe. We organise monthly events and support many others organised by like-minded music-lovers. To receive the club newsletter, The Balladeer, and regular e-mail updates on what's on around town and up and down the coast, visit our website: www.acousticroutes.org.nz or our facebook page

Come and join us at

monthly Thursday night concerts, Roseneath School, Maida Vale Rd, Wellington

monthly Sunday afternoon open mics, Thunderbird Café,
154 Featherston St, Wellington

monthly Sunday evening singarounds, Artspace, 223 The Esplanade, Petone

Your Chances to Perform

We always have loads of request for more opportunities to perform yourselves – so this year we've kept the Small Marquee we added for the 50th Festival. However, because of the challenges of performing in a tent, we've shifted the more acoustic offerings – guest workshops and blackboard concerts – to the Maire Hall, which is kinder to quieter events.

Blackboard Concerts in the Maire Hall

Saturday: 11.30am – 2.30pm and 4.30 – 6.30pm

Sunday: 10.00am – midday and 3.30 – 6.30pm

Put your name on the blackboard outside the venue before each concert. Just a few conventions:

- Two songs or tunes – maximum 10 minutes for each performance.
- Keep introductions within the 10 minute time allowed - if your 3 min song needs a 6 minute introduction you're only going to have time for one song.
- We want to give everyone a chance so if you've played at another blackboard concert the host may ask you to give someone else a chance.

Two of these blackboard concerts are specifically hosted:

- **Acoustic Routes** (the Wellington-based folk club) is hosting the concert from 11.30 – 3.30 on Saturday. (For more information on Acoustic Routes see their advert on page 19 or For More Music – Later on p28)
- **Peter Dyer** hosts an Americana-focused blackboard concert on Saturday, 4.30 – 6.30.

All comers singaround with Murray Kilpatrick.

Saturday 3.30pm, Nelson Lounge

This is a perfect place to share your music in a supportive environment. Murray runs the Pukerua Bay Folk Club and has encouraged many musicians to enjoy playing. The heart of the folk music tradition.

Final singaround

Monday 10.00am to midday, Maire Hall

The last chance to share some music. But please have all your gear packed up before you head to the singaround – we have to be completely clear of the site before 1.00pm.

Sessions

All weekend, everywhere

Basically if there's nothing in the programme the venues are open for jamming. Before you join in just check that the group already there aren't practicing for a performance

Children's Programme

One of the features of the Festival is the active programme teaching music to the next generation. Because of this tradition, we are now seeing the children and even grandchildren of the early folkies playing – and many are much better musicians than their parents!

Tune workshops

Saturday 9.30am and Sunday 10.30am, Nelson Lounge

Evie Burgin, Daniel Burgin, Hunter Giltrap and Lorraine Sevilla will teach 'trad' tunes for the kids to play over two workshops. Bring your mandolins, fiddles, whistles, recorders, guitars or whatever and learn a new tune or three.

Children's song workshops

Saturday 11.00am and Sunday midday, Nelson Lounge

Evie, Daniel, Hunter and Lorraine teach some new songs to join in with.

By and For the Children

Sunday 2.30pm, Small Marquee

This is a Wellyfest tradition – a chance for the younger members of the folk scene to strut their stuff. Run by Evie Burgin, Daniel Burgin, Hunter Giltrap and Lorraine Sevilla, this is truly a concert by and for the children.

Meditation techniques

Saturday 2.00pm and Sunday 1.30pm Nelson Lounge

Ever wondered what mindfulness meditation is all about? Or perhaps you are an experienced meditator who'd like to take an opportunity for a fresh perspective.

Jan is an experienced meditation teacher who works independently and with Mindfulnessworks who knows nonetheless exactly why it's a good thing and the difference it has made in her life.

These hour long sessions will provide guided meditation practice and hints and tips about how to incorporate more mindfulness and meditative time into your life and how you can make it work for you.

Dance Programme in the Fletcher Hall

In all cases, please avoid wearing gumboots, trackshoes, jandals or sneakers. (Partners might not appreciate steel toe-caps either!) Solid, preferably leather-soled shoes capable of sliding are recommended.

Unless otherwise noted, dances are suitable for all levels of experience and age.

Scottish Ceilidh dance with Noel Armstrong

Saturday, 9.30am

From Braveheart to Brigadoon, a workshop of everyday Scottish Ceilidh dances – dances that run through the centuries, danced to footstompin', yahoo inducing tunes. Transfer yourself to the Highlands and Islands for dances of the past, and some more contemporary examples.

The Mabou Set with Gillian Boucher

Saturday, 11.30am

A square dance from the west coast of Cape Breton Island which uses basic step-dance steps for a strathspey, jig and a reel.

Danish folkdances with ULC Trio

Saturday, 1.30pm

Here's an opportunity to learn a variety of specifically Danish dances including a chain dance in 5/4 time, a three-couple dance in 6/8 and a dance called Sønderhoning in 2/4 time.

Irish Step Ceili with Helen Stonehouse

Saturday, 3.30pm

These are the social country dances of Ireland and are easy to learn. We will learn any steps needed for each dance, but walking or skipping is also fine!



Dance Programme continued

Border Morris dance with Vergin Morris

Sunday, 10.00am

In the depths of winter the various morris dancers of Wellington get together to dance Border morris - a style hailing from the England/Wales border area. Distinguished by its single stepping style, use of sticks and outfits of tatter coats it is a simpler form of dance but with an underlying raw energy

Irish Set dance with Noel Armstrong

Sunday, midday

Irish set dance originated from French quadrilles having been introduced to Ireland by soldiers returning from the various Continental wars. The earliest set dance was recorded in Dublin in about 1812. The formations of the quadrille dances were retained and dances to the local dance meters. Through time tunes characteristic of the local area predominated such that dance to reels were frequently found in Clare and polkas in Kerry and Cork.

This year Noel will tutor the Derrada Set. Danced to jigs and reels this dance is sure to quicken the heartbeat of musicians and dancers alike. Solid, preferable leather, soled shoes capable of sliding recommended. Persons aged 12 years and above preferred.

Morris dance with Kirsty Bromley

Sunday, 2.00pm

An accomplished morris dancer, Kirsty will be sharing her expertise in a selection from Cotswold, longsword and rapper morris dance styles - quite possibly all at the same time! You have to be there...

Playford dance with Helen Stonehouse

Sunday, 4.00pm

We will be exploring the dances written down by John Playford in the 17th century, and dancing our way through various shapes of dance including longways dances, circles for three and four couples, and rounds for 'as many as will'. Each dance will be accompanied by its own tune.



Other Events

As if we didn't have enough to choose from with the concerts, workshops, dance and children's' programmes there is more:

The Balladeer Invitation Sets

All Weekend

Ruth Birnie and Jude Madill are again inviting a host of new, emerging and local talent for 30 minute sets in The Balladeer.

There'll be a great line-up of performers for you to see whilst having a bite to eat, coffee or a drink. The programme will be posted at the venue as it evolves! Check it out as you pass to hear some very talented performers.

Looking Forward concert

Saturday 1.30pm, Small Marquee

The Looking Forward concert isn't just about new or upcoming acts – more about the people that we think will influence the folk scene for many years to come.

This year it features:

Michael Muggerridge – The "younger generation" of the world famous in New Zealand Muggerridge family, Michael has some pretty big shoes to fill. He's appearing with his family in their showcase concert, but we'd like to take the opportunity to see him solo too.

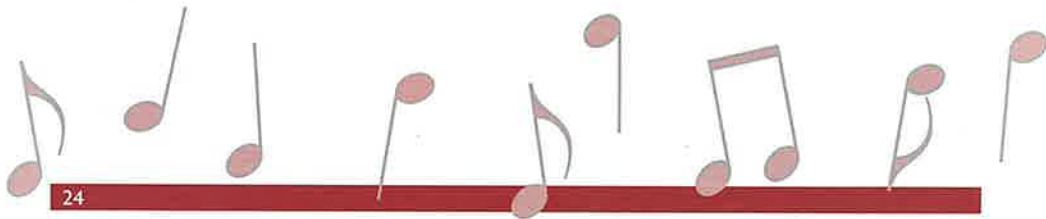
Keely Turuwhenua – Keely recently appeared at an Acoustic Routes concert night and made a big impact. Her music comes straight from the heart, introspective and powerful, allowing her to express how she sees and feels the world.

Albi – Front man of Albi and the Wolves, Albi (Chris Dent) really impressed audiences when he appeared at the festival in 2013. So we thought that, in addition to his performance with the new band, we should get another chance to hear him solo.

Festival Choir

Saturday 4pm, Sunday 4.30pm, Small Marquee Concert, Sunday 6.15pm in the Balladeer

Always wanted to know what it's like to sing in a choir? Here's your chance. Led by Nipperkin Pippetkin (that's Nigel Parry and Carol Shortis) you'll find it loads of fun. Go along to the workshops and you will find yourself in the closing act for the Balladeer stage for 2015.



Other Events continued

Dave Barnes and the Brewers

Home Brew appreciation (over 18s only), Saturday 5.30pm, Fletcher Hall

Some of our regular attendees also believe wholeheartedly in the benefits of a lifestyle involving good ale. That's not the stuff that is sold in most pubs or down the supermarket, but the kind that you craft for yourself (and friends). This is an opportunity to appreciate the hoppier things in life.

Bring a mug, your favourite brew and a stout heart. Everyone welcome – even if you don't brew and would just like to have a taste. Hosted by Dave Barnes, brewer to the Britannic Bedlam Morris Gentlemen (a very important role!)

Important: Anyone under 18 will NOT be served.

Rounds and rounds and rounds

Saturday 10.00pm, Nelson Lounge

This is a new event, requested by the stalwarts of the Saturday night trad singing session to give them a chance to warm up their voices before flinging themselves full-throated into Fathom the Bowl at 11pm.

Trad Singing Session

Saturday 11.00pm, Fletcher Hall

For many, this is one of the highlights of the Festival. Also hosted by Dave Barnes, but this time in his role as a stalwart of many such a session. Everyone is welcome to join in by leading a song or helping with the choruses. And if you think you don't know any choruses - you certainly will by the end of this session.

Saturday Night Invitation Concert

Saturday 7.30pm, Small Marquee.

Hosted by Kim Bonnington.

Folk Service

Sunday 9.30am, Nelson Lounge

Jonathan Berkahn will lead a short service of prayer and song. All are welcome to join us for a time of reflection to start the day.

Liars' Lunch

Sunday noon, The Balladeer

Hosted by Janette Wallace Gedge

For all the poets and poetry lovers, tellers of tall tales and bush poets out there. Here's your opportunity to bring along your poetry or your tall tale to share with us. Bring your favourite and your lunch for a rocking lunchtime session!

Other Events continued

Joan Prior finalists

Sunday 1pm, Small Marquee

Last year was the inauguration of the Joan Prior Award, set up by Acoustic Routes. Joan was an inspiration to generations of singers, musicians and dancers around Wellington from the late-50s. Originally from northern England, dubbed 'The Johnsonville Songthrush', she had a huge repertoire of mainly British folksong, including a generous sprinkling of bawdy songs. After she died in 2010 her family donated her collection of instruments, recordings and memorabilia to Acoustic Routes, and enabled us to set up the Award.

The three finalists for 2015 are:

Imogen Holmstead-Scott gave her first public performance and started busking with her dad at the age of 8. She then decided to learn the guitar, followed by the ukulele and banjo when she discovered folk and alt country - the Dixie Chicks, The Wreckers and EmmyLou Harris. She has had regular gigs at the Newtown Festival and the City Market, amongst others and is also a songwriter and keyboard player. Her current musical tastes cover a range of country music styles.

Michael Keane is a folk festival kid. Formerly known as the banjo player from John the Baptist, Michael currently plays with desert drone outfit *So Laid Back Country China*.

Daniel White is an acoustic guitarist and songwriter born in Greymouth and raised in the wilderness of the Southern Alps. He has followed in the footsteps of his father and uncle playing finger-style acoustic guitar and does a weekly practice busking on the streets of Wellington, where he now lives. Beyond technique/skilfulness, Daniel says 'it matters more to me that my music pleasant and peaceful and, hopefully to some ears, beautiful!'

By and for the children concert

Sunday 2.30pm, Small Marquee

Run by Evie Burgin, Daniel Burgin, Hunter Giltrap and Lorraine Sevilla, this is truly a concert by and for the children and is likely to feature a number of those who have been learning new tunes or songs as part of the weekend's children's programme.

Village Green

All weekend, between the Maire Hall and the Marquee, including the Maire Kitchen

Once again we have a number of stall holders joining us for the Festival, with products ranging from musical instruments and supplies to craft products. Please support them.

After the Ball is Over.....

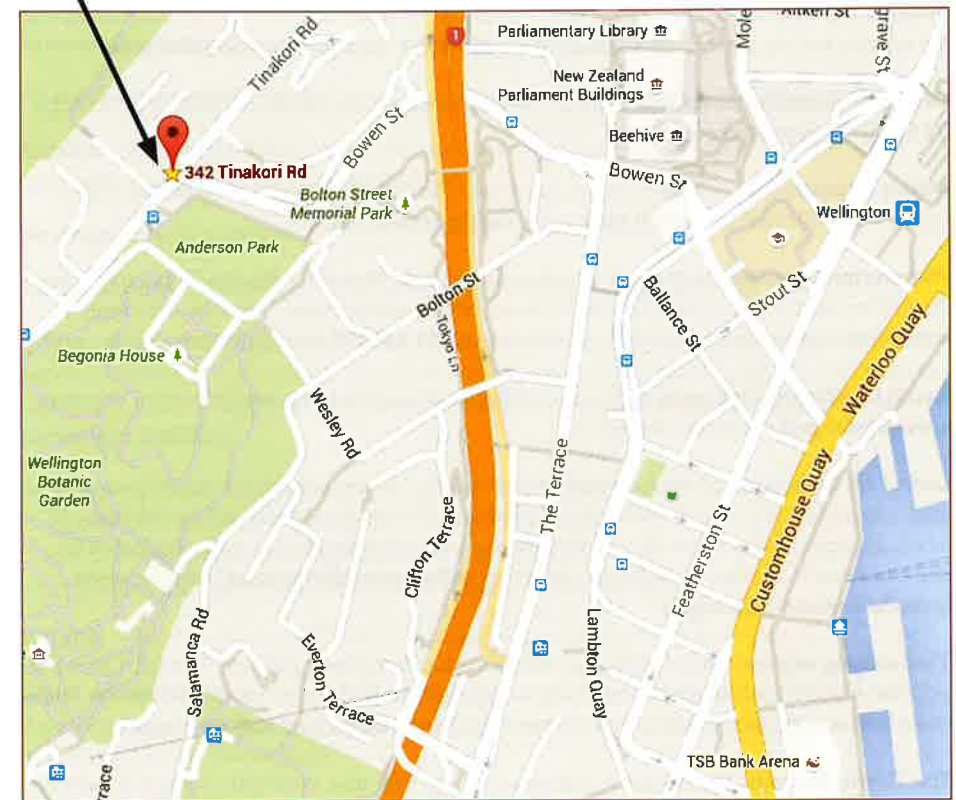
The Final Fling

If you haven't had enough music by Monday or don't have somewhere to go while you wait for a late train/bus/plane, there will be an After Festival function at the Sprig & Fern Tavern in Wellington.

They'll be open from 4pm with drinks and snacks available, and a relaxed atmosphere for chatting and jamming.

Sprig & Fern Tavern

342 Tinakori Road, Thorndon, Wellington. Open from 4pm on Monday.



For More Music – Later

There are lots more opportunities to play, to sing, to listen and the best way to keep informed is to email publicity@acousticroutes.org.nz, ask to be put on the list and you'll get info on all the gigs. Most clubs and venue also have their own email or text lists that you can ask to join.

Acoustic Routes meets for a concert on the fourth Thursday of the month at the Roseneath School Hall, 13 Maida Vale Rd, at 7.30pm. There is also an open mic night on the first Sunday of the month at Thunderbird Café, 154 Featherston Street and a singaround on the second Sunday evening of the month at Artspace, 223 The Esplanade, Petone. See www.acousticroutes.org.nz for more info

The **Wellington Bluegrass Society** meets on the third Friday of the month at the Community Service Centre, Richmond St, Petone. Contact Andrew Bicknell at **04 477 0069**, bluegrass@paradise.net.nz or www.wellingtonbluegrass.net.nz

Pukerua Bay Folk Club meets on the first Thursday of the month at 9 Donlin Road, Pukerua Bay and the contacts are Julie and Murray Kilpatrick ph **04 239 9951**, email julmur@paradise.net.nz

Ceol Alba Scottish Music Club meets on the fourth Friday of the month, Contact: Lynne Scott, ph **04 565 0164**, lynne@scott.gen.nz

Mainly Acoustic (Upper Hutt) meets on the second Tuesday of the month at the Mayfair Cafe. Contact Kevin Meehan ph **04 970 4008** or harrier@paradise.net.nz

Plimmerton Open Mic on the 2nd Thursday of the month. Plimmerton Boating Club, Kareana Bay, Plimmerton. Start time is 7pm. Million dollar venue, brilliant sound, cheap food and even cheaper drinks. Great nite out and hosted by Roy McGuinness. **021 433878**, mcclassics@xtra.co.nz

Kapiti Live Music Club meets on the second Wednesday of the month, see website for directions www.klmc.org.nz and more information.

Levin Folk Club meets on the 2nd Friday of each month, 7.30 pm, blackboard concert plus guest artist. Entry: Members \$5, Non-Members \$10, Children \$3 (includes supper); and the 4th Friday of month, 7.30 pm, acoustic night. \$2... at the Horowhenua Scottish Society Hall, cnr Bartholomew Rd and Middlesex St. Contact: Colin Brown - Secretary; colin-brown@xtra.co.nz Website: www.levin-folk-music-club.org.nz

Trad singing session - 2nd Monday each month upstairs at the Sprig and Fern, Thorndon, from 6.30 pm. The session offers the opportunity to share unaccompanied singing in a traditional manner. There is fine beer and food to be had as well. Contact: Dave Barnes david.barnes@xtra.co.nz

The Thistle Sessions, The Thistle Inn, 3 Mulgrave Street, Thorndon, Wellington, 6.30pm-8.30pm on the last Monday of every month. except in October, the session will be on TUESDAY, 27th, because of Labour weekend. For information about future sessions, please contact: thistle.session@gmail.com or check the Thistle Sessions on Facebook.

There's also **Roomfulla Blues** at The Bristol, 131-133 Cuba Street, every Thursday.

Site rules

Our access to Brookfield is dependent on everyone attending the Festival adhering to these site rules.

Dogs and firearms are not permitted in the camp.

Axes and knives are not permitted except within the kitchen area.

Rubbish – Please put all rubbish in the bins provided. So that we place less strain on services please take your recyclables home.

Mattresses must not be removed from, or transferred between the bunk rooms.

Open fires – ONLY in designated fire sites. Dead wood may be collected for use on fires and in the wetback for the shower block in the top field.

Surrounding bush – No live trees are to be cut or damaged.

No smoking anywhere inside – If smoking outside please dispose of your butts considerately.

Alcohol – We are requested to show moderation in the use of alcohol and to assist the Scout Association to maintain its good reputation.

No drugs anytime anywhere.

Electrical power connections not approved by the Festival committee will be confiscated.

Safety – Parents are responsible for their children at all times. Children are not to go in or on the lagoon, swimming pool or confidence course without adult supervision. The abseil tower is strictly out of bounds. **ANY accident that requires medical attention must be reported to a committee member.**

Security – The Festival organisers regret that they cannot guarantee the security of the site, though they, the Rovers and the Friends of Brookfield will maintain a watching eye. Please take care of your belongings and lock valuables away. If you're looking for one of the security staff – check the registration caravan or look for someone wearing a Scouting scarf.

Wildlife – Brookfields is a wildlife reserve. Please ensure that the birds are left alone.

Guest accommodation – The Old Rovers Lodge, Lions Lodge, Duty Manager's Flat and some of the cabins have been allocated to Festival guests. Please respect their right to privacy and practice time and enter only on invitation.

Toilets and showers – The site staff work hard to keep the toilets and showers clean. Please help them by using the alternate showers and toilets when one set is being cleaned.

A good night's sleep – please show consideration for those who are trying to sleep during the night.