

The Ruby Lounge

Bistro • Bar • Venue

Open from Tuesday – Sunday
for fabulous food and great music.

*We've plenty of Blues, Country, Roots and Folk in the mix,
including Acoustic Routes' monthly concert programme.*

Tuesday: Open from 4.00pm for dinner with our Tuesday Night Special open mic from 7.30pm.

Wednesday: Open from 4.00pm for dinner with the Wednesday Groove Jazz Lounge from 7.30pm.

Thursday: Open from 11.00am for lunch and dinner with live music from 8.30pm.

Friday: Open from 11.00am for lunch and dinner with after work Honky Tonk from 6.00pm and a band to start your weekend with a bang from 8.30pm.

Saturday: Open from 10.00am for brunch and dinner with live music from 8.30pm.

Sunday: Open from 10.00am for brunch and dinner with The Back Porch Sessions from 11.00am – 2.00pm and more live music later in the day.

For more information and a calendar of events see our website:
www.therubylounge.co.nz

Upstairs, 14 Bond Street, Wellington 04 472 6592

Wellington Folk Festival



Programme
Labour Weekend 2010

Acknowledgements

The Festival is delighted to be sponsored by:



The Wellington Regional Folk Foundation organises the Festival. The 2001 committee is:

President:	Gerard Hudson
Secretary:	Helen Gear
Treasurer:	Sue Harkness
Site Manager:	John Hutton
Stage Manager:	Sue Ikin
Members:	BB Bowness Ian Gear
Grants Adviser:	Peter Whiting
PR Adviser:	Janette Wallace-Gedge
Website:	Chih Leng Tham

Committee members will be wearing green fleecy jackets over the weekend, so if you have questions or concerns talk to anyone in a Wellyfest jacket.

The Committee would like to thank the many people without whom it would not be possible; our crew, volunteers, the Friends of Brookfield and the Rovers.

Thanks also to our advertisers in the programme and to the clubs and businesses which support folk music throughout the year. Please support them in return.

Welcome to the Wellington Folk Festival

A warm welcome to the Festival. We hope you have a great Labour Weekend celebrating all things folk. Here's some information that will help you have a great weekend.

Food on Site

Catering is being provided by **Lovely Grub**. The cafe is situated next to Maire Hall and will open at 8am for breakfast with hot meals available at lunch and dinnertime. A light meal and hot drink service is available throughout the day. Lovely Grub has a liquor licence as well for those who would like a glass of wine or beer with your meal.

There are kitchens available in the Fletcher Hall and down by the main drive if you want to self-cater.

Kimba is also going to be selling gelatos and ice creams for those who want to cool down a bit. Keep an eye out for her stall.

Site Services

Services including rubbish, water heating and general services are provided by the Friends of Brookfield, the Rovers and Festival volunteers. If you notice a problem please advise a committee member who will then contact the right person to deal with it.

Please do NOT take wood from the stack in the store on the upper field. This is needed to keep the water in the shower block there hot.

Please help to keep the rubbish down by:

- putting all refuse into a rubbish bin, and
- taking your bottles and cans home to recycle.

Phones and Money

There are no EFTPOS or credit card facilities on site. There are several dairies, ATMs, supermarkets, liquor stores and fast food outlets in Wainuiomata.

Mobile phones don't get reception on site. You are likely to be able to make calls about 2kms along the road. Local calls can be made from the site phone at any time but please do not use the jackpoint for internet access.

Festival Shop

There will be a stall selling CDs in the old kitchen (next to the Maire Hall) open after every performance and throughout the day. It's an opportunity to talk to the performers and buy their CDs. CDs won't be sold from the stage – we must clear the venues so the next performance can be set up.

Pete's Acoustic Guitars, our local Martin Guitars dealer, will be at the shop on Sunday, with a few of his special models to admire. He is also offering some other services - string changes, advice on set up etc.

Festival Requests

We want to make sure that everyone enjoys the Festival so there are a few requests and some new Festival conditions.

- Registration and day passes must be worn at all times and produced if requested.
- Please wait for a break in the music before entering or leaving enclosed performance venues.
- Please do not talk through concerts or workshops – go outside.
- If you intend to take part in a workshop please be at the venue on time for the start.
- The sound equipment is off limits to everyone (except crew).
- Parents – you are responsible for making sure your children don't disrupt concerts or workshops or touch sound equipment or anyone else's musical instruments.

Important

Please keep alcohol locked away at all times so that under-aged teenagers do not have unsupervised access. Scout rules okay - **NO DRUGS**.

No smoking inside any venues and please be responsible for cleaning up your butts when smoking anywhere in the grounds.

Anyone behaving in an offensive, unsafe or illegal manner will be asked to leave the Festival.

There are also **SITE RULES** set out by the Scouts Association which are a condition of our use of the site. Please make sure you follow these - see p 30.

Alex and BB

What do you get if you put two banjos in the same room? **Alex and BB** is one answer of many.

By combining the 5-string banjo and the Irish tenor banjo, BB and Alex Borwick have created a sound that calls upon their musical backgrounds including Bluegrass, Celtic, Jazz, and even Classical. They have proven that it IS possible to play two banjos in tune with each other, and they have even produced a few original compositions, which are undoubtedly a result of their varied influences.



Alex is a multi-instrumentalist, and has come a long way since keyboard lessons at the ripe young age of 7 in Palmerston North. Alex has immersed himself in Celtic music, and is a member of the critically-acclaimed quirky folk trio **Forbidden Joe**.

BB has been playing the banjo for the past six years, studying at first with her local banjo tutor and later with some well-respected players in the USA. In 2007 she was invited to the US to join the bluegrass band **Long Road Home** and tour their summer festivals. She is also the winner of the 2006 Uncle Dave Macon banjo contest. Lately BB's musical taste has been expanding; she has now finished her first year at the NZ School of Music, being the first 5-string banjo player to be accepted to study jazz.

And we promise, there will be NO banjo jokes.

- BB's Workshop - Banjo Licks is on Saturday, 2.15pm in the Nelson Lounge.
- Alex's tunes workshop is at 3.00pm on Sunday in the Nelson Lounge.
- Alex and BB play appear in concert on Sunday at 5pm in the marquee and a in the Final Concert on Sunday evening.



Beyondsemble is a fresh new band playing some of the most exciting, energetic and enchanting acoustic music to come out of NZ in recent times.

Specialising in diversity and with a strong improvisational edge, their repertoire covers a vast scope of styles including Gypsy, Eastern European, Latin, Tango, Pop, Jazz, Swing, Rocksteady, Bluegrass and Celtic Music.

An eclectic mix of tunes and songs both original and sourced from around the globe executed with virtuosic skill, passion, energy and joy. Music to move you and make you move.

With a mix of seasoned professional musicians and fresh talent, Beyondsemble

consists of Craig Denham (Mamaku Project, ex-Ardijah, Club Manouche, etc....) on Accordion, Keyboards, Vocals and Whistles; Jess Hindin (The Exiles, Tim Beverage, Boh Runga, etc....) on Violin and Keyboards; Chris Koole (The Warners!) on Vocals and homemade percussion and Mark Mazengarb on guitars and bouzouki.

Beyondsemble:

- run their "Bringing Tunes Alive" workshop in the Maire Hall, on Sunday at 10.45 am,
- appear in concert in the marquee on Saturday at 1.30pm, and
- appear the Final Concert on Sunday evening.

If you know what Cohen, Cash & Cave have in common, it's right here"
– Periplaneta (Germany)



Dubbed "*the offspring*

between Nick Cave and The Pogues" (Side-Line Mag, Belgium), Brillig play a graceful mix of multiple instruments (guitar, banjo, accordion, autoharp, viola, harmonica, ukulele, bass), and are known for their sweet male/female harmonies and infectious melodies. Featuring murder ballads, sea shanties and tales of lost love, the result is deliciously melancholic, yet undeniably uplifting!

With a 'bygone era' dress sense and captivating stage presence, Brillig draw their audience in with a dreamily romantic style that draws influence from such noted songwriters and storytellers as Neil Young, Paul Kelly, The Decemberists and Leonard Cohen.

The Festival will be Brillig's first New Zealand festival and their local launch of *The Red Coats* album, a "thrilling, decorative period piece" (Review You, USA) that the international press has embraced as '*a masterpiece*' and '*a total work of art*'. Brillig first released 'The Red Coats' overseas in May 2009 during their first European tour, where they were humbled by a standing ovation from the packed festival crowd in Leipzig, and enjoyed standout shows in Berlin and Prague. The hometown launch took place earlier this year during the band's sold out series of shows at the Adelaide Fringe Festival.

Brillig are Matt Swayne (vocals, acoustic guitar, banjo, harmonica); Elizabeth Reid (vocals, autoharp, viola accordion, ukulele) and Denni Meredith (bass). Brillig appear::

- workshop on song writing is at 3.45pm on Saturday in the Maire Hall.
- in concert in the marquee on 11.45 on Sunday
- in the Final Concert Sunday night.

Coolgrass



Top-class bluegrass with a twist - Coolgrass make musical mischief with bluegrass – no sacred cows for these boys! In addition to their own tongue-in-cheek songs, Coolgrass and their audience

have a lot of fun with James Brown, Mozart, the Beatles, Queen and more in a show that is both musical and visual. They take the classic bluegrass line-up of banjo, guitar, mandolin and double bass ... and then break a few of the bluegrass rules.

Coolgrass are Jim Golding (Banjo, vocals), Doug Wallace (guitar, vocals), Angus Golding (double bass) and Bruce Packard (mandolin, vocals). Coolgrass have visited NZ twice before and were crowd favourites at the Auckland Folk Festival this year.

Coolgrass are running two workshops:

- Bluegrass for Kids (of all ages), Maire Hall, Saturday at 1.00pm
- The Rules of Bluegrass and When to Break Them in the Maire Hall on Sunday at 12.15pm.

Coolgrass appear in concert:

- in the marquee on Saturday at 5pm
- in the Final Concert on Sunday evening.

Enda Kenny & Lindsay Martin

Enda Kenny is an Irish-born songwriter who has made his home in Melbourne.

His engaging and passionate performances have made him one of Australia's favourite

festival acts and he has toured extensively throughout Australia, New Zealand, UK and Hong Kong, often with Lindsay Martin in support.



Six self-produced CDs including 2006 Folk Album of the Year for *Here and There* and his latest theme collection *Pearler* based around the Broome pearl shelling trade in the North West.

Lindsay Martin lives about 700km further north as the kookaburra flies and has been an integral part of Enda's music since they first got together in the early 90s around a campfire at Wagga Wagga. No slouch on the fiddle, he can play *Skippy* the bush kangaroo and get more people singing than Enda.

"Enda's songs get right to the heart of the Australian experience, and accompanists don't come any better than Lindsay Martin" Fairbridge Festival Western Australia.

- Enda is presenting a workshop on the Broom pearl shelling trade in the Marie Hall, Saturday at 2.15 pm.

Enda and Lindsay appear in concert:

- in the marquee on Sunday at 3.15pm and
- in the Final concert Sunday night.

Footspa

Footspa plays a diverse and exciting range of music from all over Europe, including Bulgarian horas, Scandinavian polskas and French waltzes. The band was formed in 2007.



Bouzouki-player and guitarist Sean Manning, originally from northern Ireland, has played in a number of Celtic groups, including Blarney Rose and the Half Legendary Men.

Flute-player Louise Frampton, a classically-trained musician, joined the group

just days after arriving in Dunedin from Napier, where she'd been playing folk music for 10 years.

Singer and accordion-player Marcus Turner is well known as a solo singer-songwriter, and as part of "The Chaps".

Fiddler Anna Bowen, who was born in the Netherlands, plays in the duo "Catgut and Steel" and also plays fiddle in the folk/rock band "Radler". They joined forces to play songs and tunes from all over Europe, as well as music from the Jewish klezmer tradition, and some Turkish music.

Footspa:

- are providing the music for Cashy Yates' International Dance workshop in the Fletcher Hall, Saturday, at 11.45am.
- appear in concert in the marquee on Sunday at 1.30pm and
- appear in the Final Concert on Sunday evening.

Helen Dorothy



Folk music lovers say Wellington-based singer-songwriter Helen Dorothy "has the gift of taking everyday events and spinning them into absolute gems of songs". With haunting guitar tunings, she creates "beautiful windows into things she has noticed about the environment, its wildlife and people". Expect "poignant stories of hardship and plain human suffering, captured in heart-rendering songs that have the toughest amongst us swallowing hard..." and some quirky material too!

Helen Dorothy will be joined by the wonderfully adventurous double bassist Richard Prowse, and the exquisite Fiona Smythe on violin, who both feature on her debut CD 'The Going Away' released in 2009.

Helen appears:

- in concert in the marquee on Saturday at 10am.
- and in the Final Concert on Sunday evening

MAKE YOUR OWN GUITAR THIS SUMMER

Here's a chance to make your own guitar under the guidance of top Canadian luthier David Freeman (Timeless Instruments) and local guitar maker Paddy Burgin (Burgin Guitars). Dozens of people of all ages and walks of life have completed this three week course held in a spacious Wellington workshop. Only top quality materials are used and woodwork beginners are welcome. You can see pictures of previous courses at www.burginguitars.co.nz. Enquiries to Paddy Burgin., 384 5572 paddy@burginguitars.co.nz

Louis Baker



Louis Baker is a musician with an eclectic taste, including Soul, Funk, Folk, Blues and R & B. In 2007 Louis' song "Three Ladies" was a finalist in the prestigious NZ competition 'Play It Strange' and was released on the Play It Strange Compilation album. Louis' talent was identified again in 2008, winning the NZ national Primal Youth 'Acoustic Sessions'.

More recently Louis has focused on formalising his music, majoring in jazz guitar at Massey University NZSM, Wellington. He also plays regular gigs in popular Wellington venues like the San Francisco Bathhouse, Bodega, the Southern Cross and The Lido,

Louis Baker draws influence from musicians like Jeff Buckley, John Mayer,

Herbie Hancock, Joni Mitchell, D'Angelo and Jimi Hendrix. In developing his music, He dreams of one day performing worldwide, as well as continuing to perform before an ever broadening and appreciative audience here in New Zealand.

- Louis appears in concert in the marquee on Sunday at 10am



THE COPPER SHOP

Barbara Bowness

06 327 3606 or 0274 940 137
thecopperlady@hotmail.com

New Mayfair Deconians

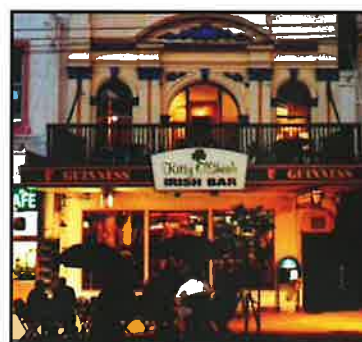


The New Mayfair Deconians (Robert Cross and Cliff Howell) have provided music for the art deco events, wineries, folk clubs, cafes and concerts throughout the Hawkes Bay region since 2007.

Everybody loves the wonderful melodies and words of music of this period.

Most of the music is intended for dancing but the refrains can be romantic, humorous and serious. The distinctive style transports audience into the art deco period when we were all encouraged to "Leave our worries on the doorstep."

The New Mayfair Deconians appear in concert on Saturday, at 3.15pm in the marquee and host a Tea Dance in the Fletcher Hall at 3.45pm on Sunday.



Kitty O'Shea's IRISH BAR

Located in the heart of Wellington's nightlife district at 28 Courtenay Place. Open every day with good food good music and great Irish hospitality.

Irish Tune Session every Monday

Proud to be associated with the Folk Festival

The Jimmies



The Saturday night ceilidh at the Festival will feature the music and calling of "The Jimmies", Wellington's longest-running Celtic music group (they've been around for about 25 years) and the city's leading ceilidh and barn-dance band.

"The Jimmies" dance repertoire encompasses classic dances from the Irish, Scottish, American, New Zealand and Australian traditions, which the band will teach and then call as you step them out.

Appearing in "The Jimmies" line-up at the Festival will be:-

Mary Hubble:	Vocals, flute, whistles
Kevin Ikin:	Tenor banjo, mandolin, guitar, vocals, percussion
Murray Kilpatrick	Accordion, banjo, guitar, vocals
Ann Machesney:	Keyboards and backing vocals
Ruairidh Morrison:	Fiddle, flute, whistles and concertina
Bob Silbery:	Bass.

And joined by founder member Liz Merton for this gig.

WomanSong

This group of women's voices will take you on a journey in song. From Hebridean seal chants and Scots port-a-beul, Irish Gaelic, Manx and English folk, through Eastern European harmonies and lilting Hebrew songs. A brief visit to Asia leads on to the Pacific Islands and Aotearoa.

Local group WomanSong - led by Carol Shortis - are accompanied by guest musicians on harp, hurdy gurdy, harmonium and drums.

- WomanSong appear in concert in the marquee on Saturday at 11.45am



www.petesacousticguitars.com

New Zealand's Largest **Martin & Co.** EST. 1833 Dealer
Great Deals on Wonderful Guitars
281 Jackson Street, Petone
Ph. 04 589-4559
Proudly supporting this 2010 Festival

Maire Hall Marquee Nelson Lounge Fletcher Hall
3.00pm GATES OPEN FOR REGISTRATIONS

Open for jamming	8.00pm Welcome Concert hosted by Acoustic Routes 11.00pm		
------------------	--	--	--

SATURDAY

Maire Hall	Marquee	Nelson Lounge	Fletcher Hall
10.00am Blackboard concert 11.30am	10.00am Helen Dorothy in concert 11.00am	10.00am Alice Williams & Eilish Wilson - Childrens' tunes workshop pt 1 11.00am	10.00am Festival Choir 11.30am
11.45am Absent Friends - a Memorial 12.45am	11.45am Womansong in concert 12.45am	11.30am Elle's Incredibells - Childrens' percussion workshop pt 1 12.30am	11.45am Cashy Yates - International Dance workshop 1.15pm
1.00pm Coolgrass workshop - Bluegrass for kids (of all ages) 2.00pm	1.30pm Beyondsemble in concert 2.30pm	1.00pm Meghan Glue - Children's song workshop pt 1 2.00pm	1.45pm Britannic Bedlam Morris Gentlemen - Morris workshop 3.15pm
2.15pm Songs of the Pearl Fishers - Enda Kenny workshop 3.15pm	3.15pm New Mayfair Deconians in concert 4.15pm	2.15pm BB - Banjo Licks 3.15pm	3.45pm Mel Brown - Irish Ceili dance workshop 5.15pm
3.45pm Brillig workshop - influences and styles in songwriting 4.45pm		4.00pm Beginners' singaround 5.30pm	
5.00pm Blackboard concert 6.03pm	5.00pm Coolgrass in concert 6.00pm		5.30pm Home brew appreciation 6.30pm
8.00pm Invitation Concert - hosted by Tracey Haskell 11.00pm	8.00pm Ceilidh - with The Jimmies 11.00pm		

11.00pm
Trad singing session
Late

SUNDAY
Maire Hall Marquee Nelson Lounge Fletcher Hall

09.30am Folk Service 10.30am	10.00am Louis Baker in concert 11.00am	10.30am Elle's Incredibells - Childrens' percussion workshop pt 1 11.30am	10.00am Linda Dear - Scottish Dance workshop 11.30am
10.45am Beyondsemble workshop - Bringing tunes alive 11.45am	11.45am Brillig in concert 12.45pm	12 noon Alice Williams & Eilish Wilson - Childrens' tunes workshop pt 2 1.00pm	11.45am Festival Choir - with Johnathan Berkahn 1.15pm
12.15pm Coolgrass - the rules of bluegrass and when to break them 1.15pm			
1.45pm Recording & marketing your music - Robbie Duncan & Chris Prowse 2.45pm	1.30pm Footspa in concert 2.30pm	1.30pm Meghan Glue - Children's song workshop pt 2 2.30pm	1.45pm Noel Armstrong - Irish set dancing 3.15pm
3.00pm Concert - By and for the Children 4.30pm	3.15pm Enda Kenny & Lindsay Martin in concert 4.15pm	3.00pm Alex - playing fretted instruments in the Celtic genre 4.00pm	3.45pm Tea Dance with the New Mayfair Deconians 5.15pm
4.30pm Blackboard Concert 6.00pm	5.00pm Alex & BB in concert 6.00pm	4.30 pm Bush Ballads Session - hosted by Roger Lusby 5.30pm	
	8.00pm Final Concert - Footspa, Helen Dorothy, Alex & BB, Brillig, break, Beyondsemble, Enda & Lindsay, Coolgrass 11.30pm		

MONDAY, 25 OCTOBER

Pack up and off site by 1pm

7.00pm
The final fling - location to be confirmed
Late

Final Concert – Sunday Night

In the marquee 8.00pm sharp

Footspa
Helen Dorothy
Alex & BB
Brillig

Beyondsemble
Enda & Lindsay
Coolgrass

MC: Robin Brew

Welcome Concert – Friday Night

In the marquee 8.00pm

Presented by Acoustic Routes

Kim Bonnington
Celia Briar and Mary Hubble
Niels Gedge and The Old Boys Network
Big Yellow Caravan

Robin Brew and Mary Livingston
Charles Harter
Barry and Marian Carter

Welcome Concert – with Acoustic Routes

Kim Bonnington: Kim is a singer/songwriter whose lovely voice will enchant. Kim's music has been influenced by Emmylou Harris, Gillian Welch, Alison Krauss as well as Merle Haggard and Marty Robbins.

Celia Briar: An internationally renowned harpist who has performed widely around New Zealand and overseas and has produced number of CDs. She will be joined by Mary Hubble to present a set of gentle, relaxing and uplifting Celtic music.

Niels Gedge and the Old Boys Network: Singer/Songwriter. His silken bass voice will appeal as he performs something old, something new with Derek Burfield on bass and Peter Cogswell the only mouth harpist known who can play drums, at the same time. Joined by a surprise(d) guest.

Big Yellow Caravan: This lively, well known Wellington group consists of "Champagne Charlie" Hazelwood on guitar, "Ali Couscous" McLeod on String Bass, Tim "I wish I was Balkan" Barrie on guitar, clarinet and vocals, and Lizzie "Isadora" Merton on violin. Be inspired by sunny tunes of the '30s and French gypsy jazz rhythm.

Robin Brew and Mary Livingston: Robin and Mary have both had a long musical dalliance in the folk genre and have recently pooled their talents as a duo. Mary and Robin present an eclectic range of songs accompanied by guitar, drawing inspiration from both ancient and modern.

Charles Harter: Charles is a singer songwriter, multi instrumentalist, and a composer of over 20 major musicals. with fellow members of his band "Project Charlie": Robyn Frude on bass and Steve Elden on percussion with guest spots from Mike Maguire (Ukelele) and Anne O'Donnell (Mouth Harp) for a set which mixes frivolity and humour with some more reflective and serious songs.

Barry & Marian Carter: Before relocating to Wellington in 2005, Barry & Marian performed regularly throughout Utah and its neighbouring states under the name of INISH (Gaelic for Island). They now perform under their own names and their sets consist of mostly original songs. Marian plays Clarinet & Tenor Recorder, and has a great voice. Barry sings and plays guitar.

Chances to Perform

In addition to being able to listen to concerts and learn at workshops, the Festival offers multiple opportunities to perform.

Blackboard Concerts

There are three blackboard concerts this year to allow everyone who wants to perform to have a chance. Put your name up on the whiteboard (okay, but 'whiteboard concert' doesn't have the same ring to it) outside the Maire Hall before each concert. There's just a few rules to follow:

- Two songs/tune sets only (to a maximum of 10 minutes)
- Keep your intros to a minimum
- Please don't sign up for every blackboard concert. Be aware that the comperes will be asking those who have played before to stand down and allow other people the opportunity to play.

Beginners' Singaround

Nelson Lounge, Saturday, 4pm

If you don't think you're confident enough to step on stage alone in one of the blackboard concerts, then this is the session for you. It's for people who would like to try performing in an informal, supportive environment, where the only people in the audience are just like you - and are waiting for their turn to come in the circle - and there's no microphones or sound technology to be a barrier.

Invitation Concert

Maire Hall, Saturday, 8pm

This is the Festival's opportunity to showcase performers who are not on the official guest list - this time. Participation is by invitation only but if you would like a spot, talk to Tracey Haskell who will be hosting the concert.

Sessions

They're everywhere, all weekend. Suss out one you like the sound of, pull up a chair and join in.

But just be aware that some groups might be practising for a concert rather than being a session that's open to everyone. Check with one of the other participants if it's an open session or private.

Children's Programme

One of the features of the Festival is the active programme teaching music to the next generation. Because of this tradition, we are now seeing the children and even grandchildren of the early folkies playing - and many are much better musicians than their parents!

This year we have a programme of six workshops and a concert - all for the kids.

Tunes

Nelson Lounge, Saturday, 10am and Sunday, 12 noon

Alice Williams and Eilish Wilson will teach tunes for the kids to play. Bring your mandolins, fiddles, whistles, recorders, guitars or whatever and learn a new tune or three.

Percussion

Nelson Lounge, Saturday, 11.30am and Sunday, 10.30am

Elle's Incredibells is a percussion workshop for children aged 4 and up. Children will decorate instruments made from recycled materials and get to make lots of noise.

Songs

Nelson Lounge, Saturday, 1pm and Sunday, 1.30pm

Meghan Glue, who is now an experienced singer/songwriter at the ancient age of 17 or thereabouts, will teach new songs and how to sing them

By and For the Children

Maire Hall, Sunday, 3pm

This is the culmination of the Children's programme. A chance for everyone at the workshops - and other kids as well - to try out their new-found skills and experience in a proper concert, in front of friends and family. Come along and support the next generation of folkies.

Hosted by one of their own - Phoebe Smith, a participant in the Festival's children's programme for many years.

Other Events

In addition to the concerts, dance workshops, kids programme and guest workshops, the Festival hosts several other events.

Absent Friends

Maire Hall, Saturday, 11.45am

The folk scene has lost several people this year who have had a huge influence on the development of the folk music here and on many people who are attending the Festival.

With so many people who might not have been able to make the memorial services/funerals, we thought it was a good opportunity to provide a chance to remember those who are missing: Jim Delahunty, Ruth Drawneek, Jane Fromont, Joan Prior and Alastair Hulett (who spent many years in New Zealand).

Absent Friends is being hosted by Robin Brew so, if you would like to contribute, see him as soon as possible.

Home Brew Appreciation

Fletcher Hall, Saturday, 5.30pm

Some of our regular attendees also believe wholeheartedly in the benefits of a lifestyle involving good ale. That's not the stuff that is sold in most pubs or down the supermarket, but the kind that you craft for yourself (and friends). This is an opportunity to appreciate the hoppiest things in life. Bring a mug, your favourite brew and a stout heart. Everyone welcome - even if you don't brew and would just like to have a taste. Hosted by Dave Barnes, brewer to the Britannic Bedlam Morris Gentlemen (a very important role!)

Important: Anyone under 18 will NOT be served.

Trad Singing Session

Fletcher Hall, Saturday, 11pm

This is one of the highlights of the Festival for many. Also hosted by Dave Barnes, but this time in his role of stalwart of many such a session. Everyone is welcome to join in by leading a song or helping with the choruses. And if you think you don't know any choruses - you certainly will by the end of this session.

Other Events cont

Folk Service

Maire Hall, Sunday, 9.30am

Felicity Giltrap and David Earle lead a special service for folkies wanting to remember that it's really Sunday and not just the second day of the Festival.

A non-denominational hour of prayer, reflection and song. Open to all. Come and welcome the day, share a song and have a cuppa.

Festival Choir

Fletcher Hall, Saturday, 10am and Sunday, 11.45am

Have you always wanted to sing but never got the courage up to try in public? Or wanted to learn how to harmonise? Led by Jonathan Berkahn, The Festival Choir will give you the opportunity to stretch your larynx in public and to learn new songs and techniques.

Jonathan has been working with choirs for over a decade now and conducted the inaugural Wellington Folk Festival Choir in 2002. He has been a regular at sessions around Wellington and can probably be found deep in them at the Festival (when the Choir isn't meeting).

Village Green

Between the Maire Hall and the marquee, all weekend

Once again we have a number of stall holders joining us for the Festival, with products ranging from musical supplies and CDs, herbal soaps and healing preparations to craft products. They all make an effort to be part of the Festival, so please support them.



Last year we had a real problem with litter left around the site, especially in the "top field" camping area up past the Lions Lodge. Please make it easier for everyone this year: put your rubbish in one of the bins or - best of all - take it home with you.

Dance Programme

International Dance - Cashy Yates

Fletcher Hall, Saturday, 11.45am

Cashy has been involved in international folkdance for approximately 20 years, running regular classes in Wellington and at the Festival. The dances she teaches are quite different from the regular ceilidh or bush dance styles, so come and try something new: learn to dance in something other than waltz, jig or reel time!

The music will be provided by guest artists, Footspa, from Dunedin.

Morris Dance - Britannic Bedlam Morris Gentlemen

Fletcher Hall, Saturday, 1.45pm

Morris as a dance form has been around for over 500 years. It employs figures that can be found in many folk dance traditions. The principal characteristics distinguishing it from others are that it is principally a display dance and the music will vary markedly in its timing to accommodate different phases of the dance. Many dances employ a capering (that is jumping) movement.

Irish Ceilidh Dance - Mel Brown

Fletcher Hall, Saturday, 3.45pm

Irish Ceilidh dance is the form that most people attending a ceilidh will have learned. Featuring dances in various groupings of up to 16 people or in circles for progressive dances. It doesn't matter if you don't have a partner; come along and buddy up with someone else who wants to put a bit of 'spit and polish' on their dancing style before the Saturday night ceilidh in the marquee.

Scottish Dance - Linda Dear

Fletcher Hall, Sunday, 10am

Linda Dear is running the Scottish dance workshop again this year.

Scottish country dances are categorised as jigs, reels and strathspeys - according to the type of music to which they are danced. Scottish country dances are generally in organised formations (referred to as 'sets') which consist of three or four couples.

Irish Set Dance - Noel Armstrong

Fletcher Hall, Sunday, 1.45pm

Noel is a regular workshop presenter at the Festival. Set dances are normally danced in sets of four couples (the same formation as square dancing) and have predefined movements for each named set. This year, Noel is teaching the South Kerry set, which is danced to polkas and jigs.

Tea Dance - New Mayfair Deconians

Fletcher Hall, Sunday, 3.45pm

A tea dance is generally held in the afternoon or early evening - so we've got that right. It involves dressing up in fancy clothes (Art Deco costumes please - for the uninitiated, that's the early part of last century) and partaking of light refreshments as part of a 'refined social gathering'.

As this is a folk festival, "refined" might have a number of interpretations, but bring your costumes from the 1920s-1940s, rustle up a batch of fairy cakes and cucumber sandwiches and the Festival will lay on the tea.



Your Local Garden Store 50
Webb St Top of Cuba St
Across the from Hell Pizza
Seeds, organic compost,
top soil and potting mix,
organic seedlings, herbs
Owned by Mary & Kaye


grow from here

This Voucher entitles you to 20% off all
purchases \$20 and over up to \$200. Avail
1 November to 30 December 2010
Grow From Here 04 384 8178
<http://www.growfromhere.co.nz/>
Top of Cuba - 50 Webb St Te Aro

Guest Workshops

Alex Borwick is leading a workshop for fretted instruments in the Celtic genre, such as tenor banjo, mandolin, bouzouki and mandola. He will cover the basics of technique, ornamentation and variations, using tunes to demonstrate the various concepts. Bring your instruments and crowd into the **Nelson Lounge at 3.00pm on Sunday.**

BB will run a banjo licks workshop for pickers and those she describes as "other curious beings". The workshop caters to those who venture out with their questions. Topics can include roll patterns, chord voicings, improvisation, Scruggs, melodic and single string techniques. **Nelson Lounge, Saturday, 2.15pm**

Beyondsemble will teach people a simple tune and then give examples of how to breathe some life into it. This will include such things as dynamics, arrangement, variation, altering the accompaniment, possibly key, tempo and rhythm changes. There is so much more to music than just playing the notes. Learning the notes is just the starting place of bringing music alive. **Maire Hall, Sunday, 10.45am**

Brillig's songs are strongly based in a storytelling tradition, with recognisable folk themes. The workshop will look at the difference between recorded and live interpretations of songs (with demonstrations of each), and examine how the two songwriters in the group are influenced by their backgrounds in a variety of genres (folk, pop, gothic, musical theatre). The band will discuss how each of these topics led to a selection of songs. **Maire Hall, Saturday, 3.45pm.**

Coolgrass will be doing two workshops. The first is Bluegrass for Kids, featuring strange songs from Coolgrass about smelly dogs, rampant cane-toads, love-sick flies, hapless rabbits and more. Apparently there will be some awful hats, too. **Maire Hall, Saturday, 1pm**

The second is The Rules of Bluegrass (and when to break them). Coolgrass demonstrate and discuss what makes bluegrass the distinctive musical style that it is, including instrumentation, playing styles, harmonies, history and much more. And Coolgrass being Coolgrass, the workshop will also take a less serious look at some of bluegrass's "rules".

This workshop takes both a serious and a not-so-serious look at the fundamentals of bluegrass, and what makes the genre distinctive. Coolgrass will demonstrate and discuss everything from instrumental styles and vocal harmonies to hat styles. **Maire Hall, Sunday, 12.15pm**

Enda Kenny presents a workshop called "Pearler - Songs of the Pearling Days". The workshop reflects the stories in his most recent CD about the early days of the pearl shelling trade in Broome - when men were men and pearls really WERE pearls. **Maire Hall, Saturday at 2.15pm.**

Robbie Duncan and **Chris Prowse** are running a workshop on what to consider when you're planning to record music. The workshop will cover the planning process, the actual recording, related copyright matters, packaging and sales. Robbie will be able to give lots of practical advice on the do's and don'ts of recording from his years of recording the best of New Zealand's acoustic music at his Braeburn Studios. Chris will draw on his experience with Red Rocks Records for the rights, marketing and sales tips. **Maire Hall, Sunday at 1.45pm**

Roger Lusby, award winning bush poet, balladeer and songwriter hosts the "Liar's Breakfast" at Nelson's Tui Folk Festival, a BYO poetry session. Roger will host a similar event for us this year and invites everyone to get involved, share a poem or yarn or just come along and listen.

Enter the One Minute Poem competition - any topic, but it must rhyme and be no longer than one minute - to win the title of inaugural Wellyfest Best Bush Poet. **Nelson Lounge, Sunday, 4.30pm.**

Eric Bogle with John Munro

Supported by John Sutherland

**Ruby Lounge, Sunday, 31 October,
7.30pm, \$25 (\$20 - club members)**

After the Ball is over

The Final Fling

If you haven't had enough music by Monday or don't have somewhere to go while you wait for a late train/bus/plane, there will be an After Festival function to go to. Venue and times to be announced during the Festival

For More Music - Later

There are lots more opportunities to play, to sing, to listen and the best way to keep informed is to email publicity@acousticroutes.org.nz, ask to be put on the list and you'll get all the info on all the gigs. Most clubs and venue also have their own email or text lists that you can ask to join.

Acoustic Routes meets for a concert fourth Sunday of the month at the Ruby Lounge at 7.30 pm and a blackboard concert on the second Wednesday (venue to be announced).

The **Wellington Bluegrass Society** meets on the third Friday of the month at the community service centre, Richmond St, Petone. Contact Andrew Bicknell at 04 477 0069, bluegrass@paradise.net.nz or www.huttcity.com/wellingtonbluegrass

Pukerua Bay Folk Club meets on the first Thursday of the month at 9 Donlin Road, Pukerua Bay and the contacts are Julie and Murray Kilpatrick ph 04 239 9951 or email julmur@paradise.net.nz.

Mainly Acoustic (Upper Hutt) meets on the second Tuesday of the month at the Mayfair Cafe. Contact Kevin Meehan ph 04 970 4008 or [harrier\(at\)paradise.net.nz](mailto:harrier(at)paradise.net.nz)

Guitar Lessons - Rob Joass

20 years' experience teaching all styles of guitar. Flat and finger picking. Country, folk, blues, rock. Porirua area. ph 2366277 or 0274 500615. robjoass@gmail.com

fiddlecraft.co.nz

From go to whoa!

Traditional tunes and techniques for the violin with Liz Auchinvole; 15 years' teaching/performing /recording experience in NZ, USA & Canada

Kapiti Live Music Club meets on the third Wednesday of the month at Valhalla, Poplar Ave, Raumati South and also has an acoustic session there on the first Wednesday of the month. www.klmc.org.nz for more information.

Levin Folk Club meets on the 2nd Friday of the month (except January) at the Horowhenua Scottish Society Hall. Ph Anne Campbell on 06 368377 or email annemc@ihug.co.nz

Wairarapa Folk Club Contact Jenny Freemantle or Remco De Ket at 06 370 1021 or email wairarapafolkclub@paradise.net.nz

More for Wellingtonians

Mojo Invincible, 161 Willis Street Wellington. First, second and fourth Fridays each month, from 7.00 p.m. Organised by Ruth Birnie & Niels Gedge. Email ruthbirnie@clear.net.nz or niels.gedge@xtra.net.nz for more information or to join their text list.

The **Welsh Dragon**, Cambridge Tce – unaccompanied singing session every Tuesday evening from 8.00 onwards. The emphasis is on chorus songs..

The **Welsh Dragon Acoustic**; last Thursday of the month, from 7.30 onwards for a concert. Niels Gedge is in charge there niels.gedge@xtra.net.nz

There's also **Roomfulla Blues** at The Bristol every Thursday and loads of music six nights a week at the Ruby Lounge. www.therubylounge.co.nz or email Laura at laura@lauracollins.co.nz to join her list.



MOJO INVINCIBLE 161 WILLIS ST

LIVE MUSIC

Good coffee, wine and food and great music. Supporting folk music through Mojo Acoustic, on the first, second and fourth Fridays of the month.

Open Mon-Thurs, 7am - 5pm; Fri, 7am - late; Sat-Sun, 9am - 4pm.

MOJO

Site Rules

Our access to Brookfield is dependent on everyone attending the Festival adhering to these site rules.

Dogs and Firearms are not permitted in the camp.

Axes and knives are not permitted except within the kitchen area.

Rubbish – please put all rubbish in the bins provided. So that we place less strain on services please take your recyclables home.

Mattresses must not be removed from, or transferred between the bunk rooms.

Open Fires - ONLY in designated fire sites. Dead wood may be collected for use on fires and in the wetback for the shower block in the top field.

Surrounding bush – no live trees are to be cut or damaged.

No Smoking anywhere inside. If smoking outside please dispose of your butts considerably.

Alcohol – we are requested to show moderation in the use of alcohol and to assist the Scout Association to maintain its good reputation.

No Drugs anytime anywhere.

Electrical Power connections not approved by the Festival committee will be confiscated.

Safety – Parents are responsible for their children at all times. Children are not to go in or on the lagoon, swimming pool or confidence course without adult supervision. The abseil tower is strictly out of bounds. **ANY accident that requires medical attention must be reported to a committee member.**

Security – The Festival organisers regret that they cannot guarantee the security of the site though they, the Rovers and the Friends of Brookfield will maintain a watching eye. Please take care of your belongings and lock your valuables away.

Wildlife – Brookfields is a wildlife reserve. Please ensure that the birds are left alone.

Guest accommodation – The Old Rovers Lodge, Lions Lodge and Leader's Flat have been allocated to Festival guests. Please respect their right to privacy and practice time and enter only on invitation.

A good night's sleep – please show consideration for those who are trying to sleep during the night.

Site Plan

