

**PORT NICHOLSON
FOLK**

FESTIVAL

1974

PROGRAMME



in association with

the

Q.E.II Arts Council of N.Z.

PROGRAMME PRINTED BY COURTESY OF

rank xerox

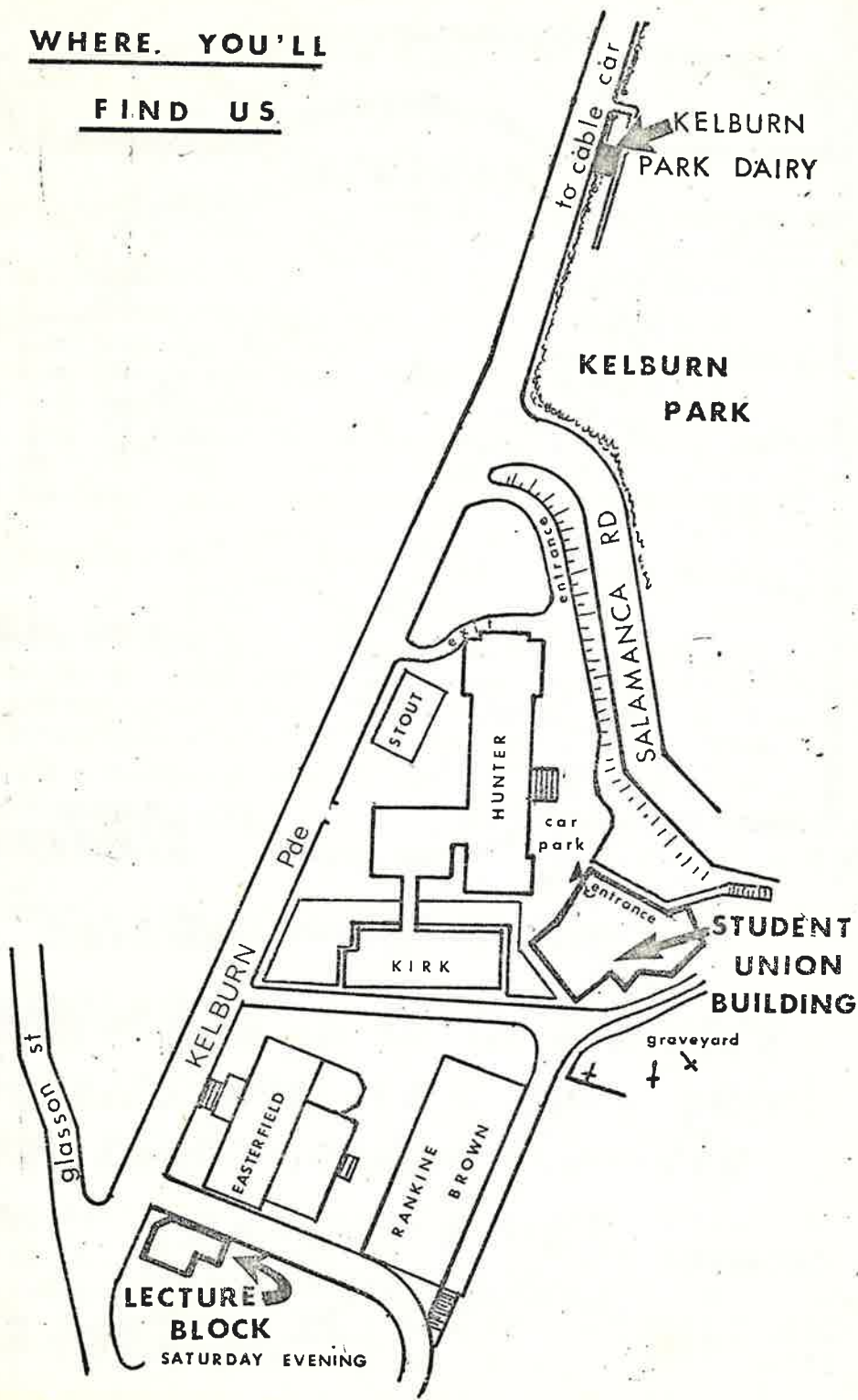
11 12 13 14 15 16 17 18 19 20 21 22 23 24 25 26 27 28 29 30

There is nothing drastically different this year in the basic content. We have tried to cover all forms of folk music and are introducing folk dancing in a small way. To try and accommodate as much and as many different things as possible, we have introduced the overlapping workshop system by which each lecture or workshop can run for up to two hours and starts one hour before the next but in a different room. Thus it would be possible to hear the first hour of each and every lecture. To enable this system to work properly it is essential for all events to start promptly at the advertised time and this we intend to do whether an audience is present or not. The same applies to all the concerts. This doesn't mean that the Festival is not going to be informal, on the contrary, our aim is organised informality and we sincerely hope that there will be many informal sessions and activities going on throughout the weekend.

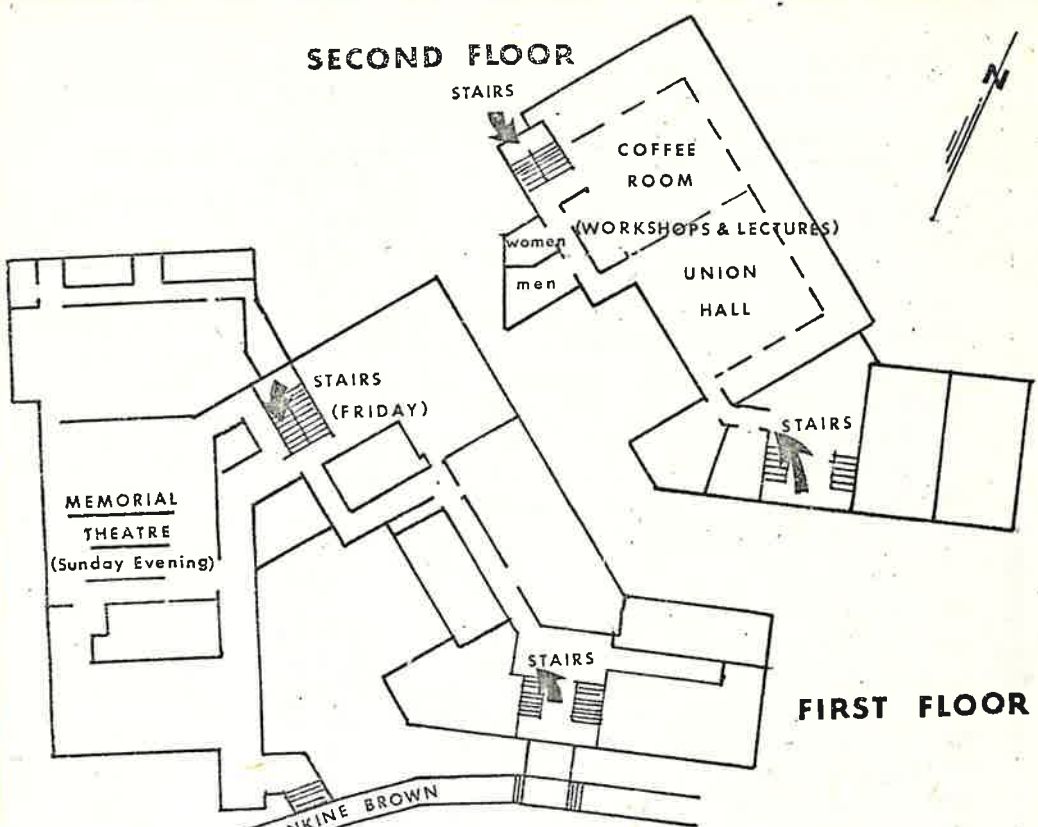
We do not intend at this stage to apologise for any failings or omissions but hope that you will accept the Festival for what it is, an attempt to present an opportunity for all lovers of folk music to meet and play and listen to various forms of folk music in the company of some of the better exponents of the music.

WHERE. YOU'LL

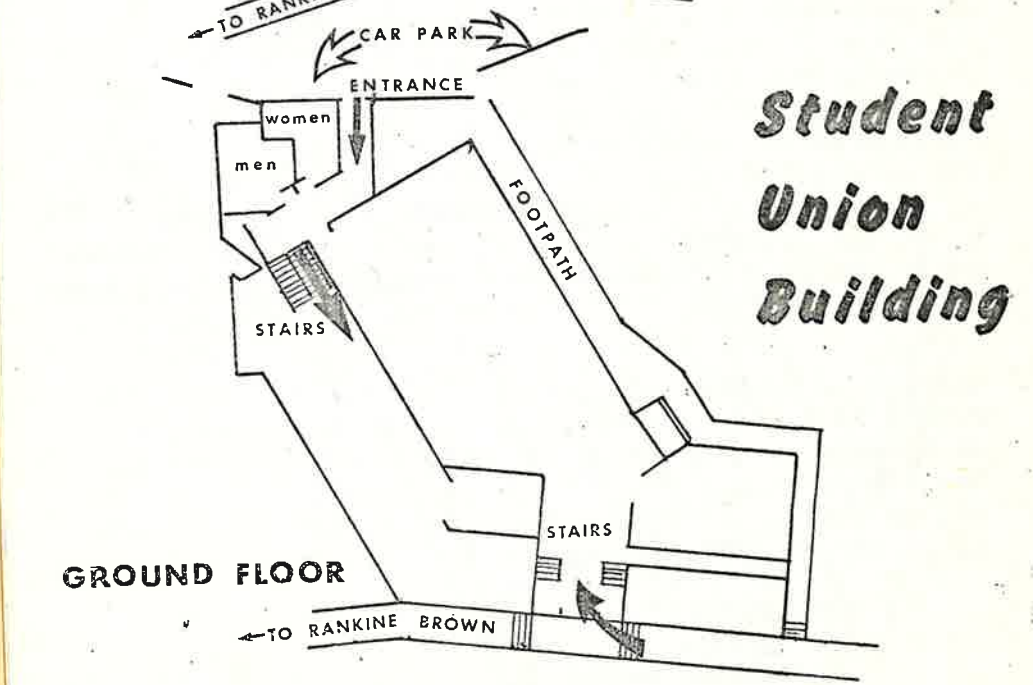
FIND US.



SECOND FLOOR



FIRST FLOOR



*Student
Union
Building*

GROUND FLOOR



saturday

Workshops/Lectures.

These will start on time!!!

<u>Time</u>	<u>Subject</u>	<u>Presented by</u>	<u>Room</u>
9 a.m.	Banjo For Beginners	Don McLennan	1
10 a.m.	Calender Customs	Nigel Bonallack	2
11 a.m.	American Mountain Music	Frank Sillay	1
12 noon	Sea Shanties	Mike Stanley	2
1 p.m.	Illustrated Blues Lecture	Alan Young	1
2 p.m.	Folk Guitar For Beginners	Paul Metsers	2
3 p.m.	Bush Band Music	Phil Garland & Frank Fyfe	1
4 p.m.	Autoharp	Dave Hart and Friends	2

Further details and any amendments to the above will be shown on the notice board. Power cuts may cause us to change the sequence so that recorded items can still be presented, so you should check the board beforehand.

Room 1 = Smoking Room

Room 2 = Union Hall

**before you go on to tonight's
concerts and it's a good, quick
meal that's needed then try**

Friday 8am

CENTRE POINT

Saturday 4pm

Midnight

Midnight

43 cuba st.

SHOW YOUR FESTIVAL REGISTRATION
CARD AND RECEIVE 10c in the \$1

Saturday evening

For this evening we adjourn to the LECTURE BLOCK where we have two concerts running at the same time, one in each of the lecture halls. Both of these concerts start at 8 o'clock sharp.

In the first of these halls, we start with some contemporary folk music and follow this up with a country and blues concert.

The second one commences with a concert of New Zealand and Australian music followed by British traditional, which will be interspersed with a ceilidh led by Joan Prior and friends.

For more details of these concerts please watch the notice board. You should also look on the board to see if there is a party afterwards which you'd like to attend. It is hoped that anybody who is prepared to put on a party will tell one of the officials so that all parties will be listed, indicating roughly what kind of folk music will be catered for at each. Most will be B.Y.O.G.

BEFORE YOU SET OUT TO BUY
ASK

Joe Giard

FOR HIS PERSONAL,
EXPERT ADVICE

**the
guitar
specialist**

SOUND EQUIPMENT

STRINGED INSTRUMENTS

16 RIDDIFORD ST. NEWTOWN.

PH. 898677

sunday

Workshops/Lectures

These will continue in the format established yesterday. Watch the notice board for changes.

<u>Time</u>	<u>Subject</u>	<u>Presented by</u>	<u>Room</u>
11 a.m.	Spirituals	Alan Young etc	1
12 noon	Melodeon	Dave Hart	2
1 p.m.	Blues & Recording	Colin Heath	1
2 p.m.	N.Z. Folklore	Frank Fyfe	2
3 p.m.	American Country Music	Keith Finlayson	1
4 p.m.	Fiddle	Leo Ready	2

Don't forget that most of your food and drink requirements are available on the Festival site by arrangement with Ron Craig and the Wellington Folk Centre. For other needs please remember those who have advertised in this programme. They are there to serve you and they are sure to give you good service.

JUST ALONG SALAMANCA RD IN KELBURN PARK

THE **Kelburn dairy**

FOR YOUR IMMEDIATE DAIRY NEEDS, SANDWICHES
AND (check for yourself) THE BEST HAMBURGERS IN
WELLINGTON

Open 9am.-3pm. Sat. 11am.-3pm. Sun.

just for the festival!



sunday concert

As a climax to the main part of the weekend we present for your entertainment in the MEMORIAL THEATRE a grand concert, to be given by many of the best performers within the Folk Music idiom. Full details of this concert, including the sequence of acts, will be posted on the notice board during the day. Those appearing will include the following artists:-

David & Jean James.....Frank Sillay
Leo Ready & Barry McDonald...Denny Mackay
Keith Finlayson.....Pat, Bev & Colin
Phil Garland & The Canterbury Crutchings Bush &
Ceilidh Band.....Frank Fyfe.....Mitch Park
Dave Hart.....John Sutherland.....Alan Young
Mike Stanley.....Jean Reid.....Paul Metsers
Nigel Bonallack.....and others

As with the rest of the weekend, it is intended that this concert will start at the advertised time, so you are urged to be seated early.

Afterwards we all adjourn to the FOLK CENTRE for a Bawdy Ballads session led by Mitch Park, which event we expect to degenerate into a party, so come along prepared. There may be some refreshments available, or you can bring your own. Don't forget to bring your instruments.

monday

A number of you will undoubtedly be making your way home this morning, particularly those who have a long drive ahead of you. For this reason we won't know how many will be attending the Monday morning activities and therefore we are keeping the whole thing strictly informal. We meet at the Wellington Folk Centre from 10 o'clock and the session will be of a largely social and musical nature. You are invited to submit any suggestions you may have for improving the Festival, assuming such an event is to be held again next year. This is not intended to be a post mortem but your Committee will be meeting to review the weekend and decide whether it has been sufficiently encouraging to start planning for Queen's Birthday weekend 1975.

We wish all of you a safe journey home and hope to see you all again next year at the only Folk Festival held regularly in Wellington and the only Folk Festival to be held during the Queen's Birthday weekend.

RECORDS

PRE-RECORDED CASSETTES

8 TRACK CARTRIDGES

RECORD SPECIALISTS Ltd.

248 LAMBTON QUAY

**RUN BY MUSIC LOVERS - FOR MUSIC LOVERS
THE SMALL SHOP WITH THE BIG SERVICE**

FOLK MUSIC!

WELLINGTONS BEST

AT THE

WELLINGTON

FOLK CENTRE

(Caterers to the Festival)

EVERY SUNDAY EVENING -----8.00pm

10 HOLLAND ST

AND AT THE

KAPITI FOLK CLUB

EVERY SECOND AND FOURTH MONDAY OF EACH MONTH

FROM 8.00pm

MANA LITTLE THEATRE PLIMMERTON